

Product datasheet for **AP09361PU-N**

RAB11FIP3 Rabbit Polyclonal Antibody

Product data:

Product Type:	Primary Antibodies
Applications:	ELISA, WB
Recommended Dilution:	ELISA: 1/2,000 - 1/10,000. Western Blot: 1/200 - 1/2,000.
Reactivity:	Human, Mouse, Rat
Host:	Rabbit
Isotype:	IgG
Clonality:	Polyclonal
Immunogen:	Recombinant protein corresponding to amino acids spanning the carboxyl terminal one-third of human FIP3
Specificity:	This antibody is directed against FIP3 protein.
Formulation:	0.02 M Potassium Phosphate, 0.15 M Sodium Chloride, pH 7.2 State: Aff - Purified State: Liquid (sterile filtered) purified Ig fraction Preservative: 0.01% (w/v) Sodium Azide
Concentration:	lot specific
Purification:	Affinity chromatography
Conjugation:	Unconjugated
Storage:	Store the antibody at -20°C. Avoid repeated freezing and thawing.
Stability:	Shelf life: one year from despatch.
Gene Name:	RAB11 family interacting protein 3
Database Link:	Entrez Gene 9727 Human O75154



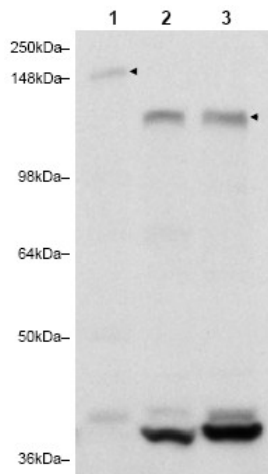
[View online »](#)

Background:

Rab11 Family-Interacting Protein 3 (FIP3)/Arfophilin-1 and FIP4/Arfophilin-2 are dual effectors for Rab11 and the ADP-ribosylation factor Arf6. Rab11 and Arf6 are involved in membrane delivery from recycling endosomes to the plasma membrane during cytokinesis. The dual Rab11/Arf6 binding proteins, FIP3 and FIP4, function in the delivery of recycling endosomes to the cleavage furrow and are, together with Rab11, essential for completion of abscission, the terminal step of cytokinesis. An interaction between Rab11-FIP3 and ASAP1 has also been identified (personal communication, P. Randazzo, CCR-NCI, Bethesda, MD). ASAP1 is an Arf GTPase-activating protein that has been implicated in the invasive properties of uveal melanoma and mammary carcinoma.

Synonyms:

Rab11-FIP3, FIP3-Rab11, Arfophilin-1, ARFO1, Eferin, KIAA0665

Product images:

Western blot using affinity purified anti-FIP3 to detect FIP3 (arrowhead) in 3T3 cells (lane 1), HeLa cells (lane 2) and 293T cells (lane 3). The membrane was probed with the primary antibody at a 1:2,000 dilution.