

## Product datasheet for **AP09187PU-S**

### L1 / ORF2 Chicken Polyclonal Antibody

#### Product data:

Product Type:	Primary Antibodies
Applications:	ELISA, WB
Recommended Dilution:	<b>ELISA:</b> 1/10000. <b>Western Blot:</b> 1/2000-1/10000. Expect a band approximately 149 kDa in size corresponding to L1 protein by western blotting in the appropriate cell lysate or extract.
Reactivity:	Chimpanzee, Human
Host:	Chicken
Isotype:	IgY
Clonality:	Polyclonal
Immunogen:	Two Synthetic peptides conjugated to keyhole limpet hemocyanin (KLH). The peptides correspond to regions within the endonuclease domain of L1/ORF2 protein
Specificity:	This antibody recognizes L1 / ORF2. Reactivity occurs against Human L1/ORF2 protein and is useful in determining its presence in various assays.
Formulation:	0.02 M Potassium Phosphate, 0.15 M Sodium Chloride, pH 7.2 State: Ig Fraction State: Liquid IgY fraction Preservative: 0.01% (w/v) Sodium Azide
Concentration:	lot specific
Purification:	IgY fraction antibody purified from monospecific Chicken egg yolks by a multi-step process which includes selective precipitation and salt fractionation followed by extensive dialysis against the buffer.
Conjugation:	Unconjugated
Storage:	Store the antibody at -20°C. Avoid repeated freezing and thawing.
Stability:	Shelf life: one year from despatch



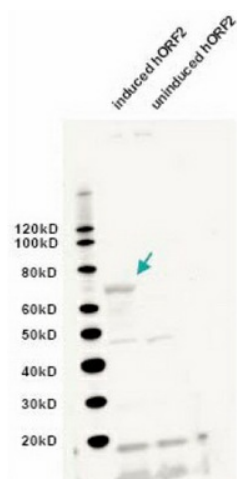
[View online »](#)

**Background:**

The L1 (LINE-1), or Long INterspersed Element, retrotransposon ORF2 is the most common open reading frame in the human genome, present in various forms in many thousands of copies. This large family of proteins includes magnesium dependent endonucleases and a large number of phosphatases involved in intracellular signaling. Both intact ORF1 and ORF2 are absolutely required for autonomous retrotransposition. ORF2 encodes an endonuclease, reverse transcriptase, and zinc knuckle domains. The expression of ORF2 appears to be tightly regulated except in germ line tissues, embryonic tissues, and certain cancers including teratomas, testicular cancers, and leukemias. This antibody is intended for use in studying control of L1 retrotransposons.

**Synonyms:**

LINE-1

**Product images:**


Western blot using IgY fraction of anti-L1/ORF2 antibody shows detection of induced bacterially expressed human ORF2 (left lane). No specific band staining is seen in the uninduced lane (right lane). The lower molecular weight bands represent non-specific