

## Product datasheet for **AP09164PU-S**

### CCL2 Rabbit Polyclonal Antibody

#### Product data:

Product Type:	Primary Antibodies
Applications:	ELISA, WB
Recommended Dilution:	ELISA: 1/4500. Western Blot: 1 µg/ml.
Reactivity:	Bovine
Host:	Rabbit
Isotype:	IgG
Clonality:	Polyclonal
Immunogen:	Recombinant protein raised in yeast, corresponding to the 76 amino acids of the mature bovine CCL2 protein
Specificity:	This antibody reacts to MCP1 / CCL2.
Formulation:	0.02 M Potassium Phosphate, 0.15 M Sodium Chloride, pH 7.2 containing 0.01% (w/v) Sodium Azide State: Aff - Purified State: Liquid (sterile filtered)
Concentration:	lot specific
Purification:	Affinity chromatography on Protein A
Conjugation:	Unconjugated
Storage:	Store the antibody at -20°C. Avoid repeated freezing and thawing.
Stability:	Shelf life: one year from despatch.

#### Trial Size:

This vial contains a relatively low volume of reagent (25 µL). To minimize loss of volume dilute 1:10 by adding 225 µL of the buffer stated above directly to the vial.

Database Link: [Entrez Gene 281043 Bovine P28291](#)



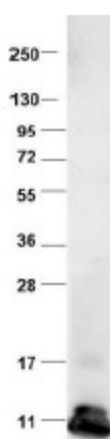
[View online »](#)

**Background:**

CCL2 is a small cytokine belonging to the CC chemokine family that recruits monocytes, memory T cells, and dendritic cells to sites of tissue injury and infection. This chemokine is produced as a protein precursor containing a signal peptide of 23 amino acids and a mature peptide of 76 amino acids. It is a monomeric polypeptide, with a total molecular weight of approximately 8.8 kDa. The cell surface receptors that bind CCL2 are CCR2 and CCR4. CCL2 is found at the site of tooth eruption and bone degradation. In the bone, CCL2 is expressed by mature osteoclasts and osteoblasts and is under the control of nuclear factor  $\kappa$ B (NF $\kappa$ B). In human osteoclasts, CCL2 and RANTES (regulated on activation normal T cell expressed and secreted) may act as an autocrine loop in human osteoclast differentiation. CCL2 causes the degranulation of basophils and mast cells, an effect potentiated by pre-treatment with IL-3 and other cytokines.

**Synonyms:**

C-C motif chemokine 2, SCYA2, MCAF, Small-inducible cytokine A2, MCP-1, HC11, HC-11

**Product images:**


Western blot using Protein-A Purified Anti-bovine CCL2 antibody shows detection of recombinant bovine CCL2 at 8.8kDa (arrow) raised in yeast. Protein was purified and resolved by SDS-PAGE, then transferred to PVDF membrane. Membrane was blocked with 3% BSA (BSA-30, diluted 1:10), and probed with Anti-bovine CCL2. After washing, membrane was probed with Dylight (TM) 649 Conjugated Anti-Rabbit IgG (H&L) (Donkey) Antibody.