

Product datasheet for **AP09093SU-N**

Biotin Ligase Tag / BLT Rabbit Polyclonal Antibody

Product data:

Product Type:	Primary Antibodies
Applications:	ELISA, WB
Recommended Dilution:	ELISA: 1/5,000. Western blot: 1/5,000.
Reactivity:	Escherichia coli
Host:	Rabbit
Isotype:	IgG
Clonality:	Polyclonal
Immunogen:	GLNDIFEAQKIEWH (Minimal BirA substrate; Biotin is added to the sequence at the Lysine)
Specificity:	This antiserum detects the minimal peptide substrate (GLNDIFEAQKIEWH) for the <i>E. coli</i> Biotin ligase tag (BLT of BirA). This peptide is also called the Biotin Acceptor Peptide (BAP) of the Biotin Carboxyl Carrier Protein (BCCP) subunit of acetyl CoA carboxylase of <i>E. coli</i> . Western blot analysis of <i>B. subtilis</i> strains producing either (BAP-tagged) SPollIAH (XWB49) or (BAP-tagged) SpollIQ (XWB46) showed strong and specific reactivity to the antisera. Minor background bands of unknown identity may be observed. The antisera will recognize the BAP/BLT tag irrespective of the whether the tag is biotinylated (data not shown). The peptide is a substrate for Biotin ligase, which places a Biotin moiety on the central lysine of the peptide when it interacts with BirA (the Biotin ligase). When proteins contain this sequence tag, they can be very efficiently pulled down after biotinylation using streptavidin beads.
Formulation:	0.02M Potassium Phosphate, 0.15M Sodium Chloride, pH 7.2 State: Serum State: Liquid (sterile filtered) Serum Stabilizer: None Preservative: 0.01% (w/v) Sodium Azide
Concentration:	lot specific
Conjugation:	Unconjugated
Storage:	Store the antibody undiluted at 2-8°C for one month or (in aliquots) at -20°C for longer. Avoid repeated freezing and thawing.



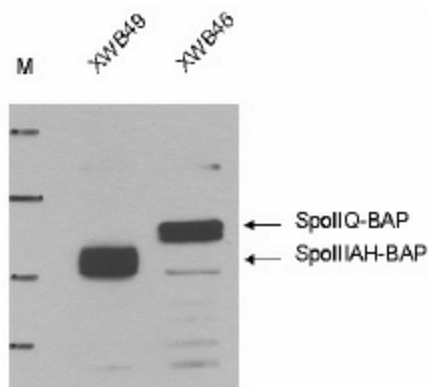
[View online »](#)

Stability: Shelf life: one year from despatch.

Background: In *Escherichia coli*, transfer of biotin to the epsilon amino group of a specific lysine residue of the biotin carboxyl carrier protein (BCCP) is accomplished by the biotin holoenzyme synthetase BirA. The minimal substrate requirement of BirA-catalyzed biotinylation is a 14-residue peptide known as the biotin ligase tag (BLT). This antibody can be used to detect BLT in recombinant expression systems.

Synonyms: Biotin Ligase Epitope Tag, BirA, bioR, dhbB

Product images:



Western blot using Anti-Biotin Ligase EPITOPE TAG antibody shows detection of the BLT Ligase Target in lysates of whole cell *Bacillus subtilis* strains producing either BAP-tagged (Biotin-Acceptor Peptidetagged) SpolIIAH (XWB49) (~ 25 kDa) or BAP-tagged Spo