

Product datasheet for **AP09040AF-N**

IKK beta (IKBKB) (310-376) Chicken Polyclonal Antibody

Product data:

Product Type:	Primary Antibodies
Applications:	IHC, WB
Recommended Dilution:	Immunohistochemistry on Paraffin Sections: 2.5 µg/ml. Western Blot.
Reactivity:	Human, Mouse, Rat
Host:	Chicken
Isotype:	IgY
Clonality:	Polyclonal
Immunogen:	Recombinant Human IKBKB / IKK Beta Epitope: aa310-376
Specificity:	This antibody recognizes Amino Acids 310-376 of IKB Kinase Beta (IKKbeta/IKK2) (IKBKB).
Formulation:	PBS State: Azide Free State: Liquid purified IgY fraction Preservative: None
Purification:	Immunoaffinity Chromatography
Conjugation:	Unconjugated
Storage:	Store the antibody undiluted at 2-8°C for one month or (in aliquots) at -20°C for longer. Avoid repeated freezing and thawing.
Stability:	Shelf life: one year from despatch.
Gene Name:	inhibitor of kappa light polypeptide gene enhancer in B-cells, kinase beta
Database Link:	Entrez Gene 3551 Human O14920



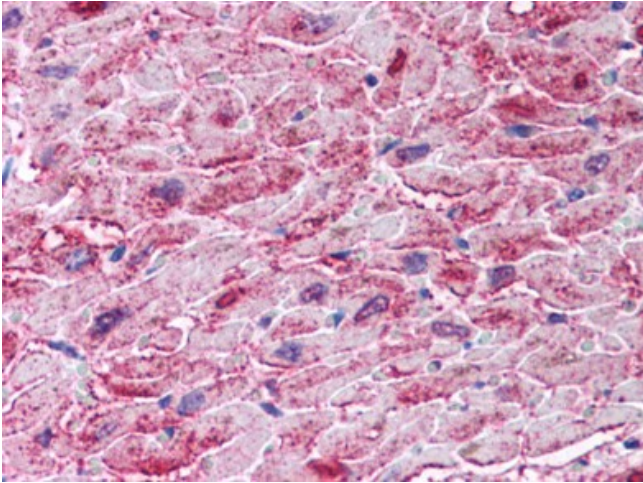
[View online »](#)

Background:

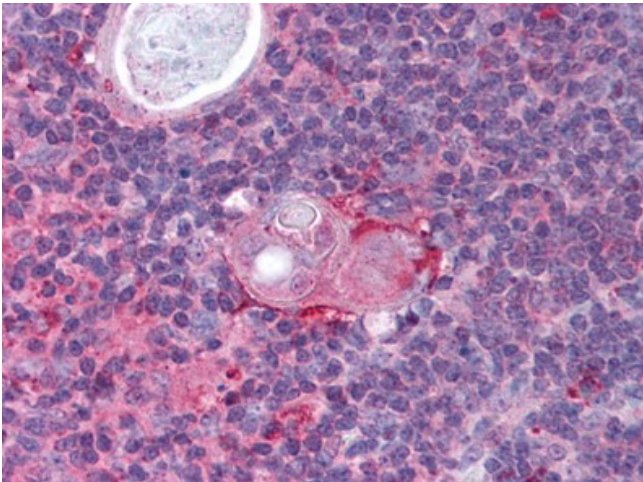
IKK beta (I-Kappa-B kinase-beta) is a member of the IKK complex which is composed of IKK alpha, IKK beta, IKK gamma and IKAP. Phosphorylation of I-Kappa-B on a serine residue by the IKK complex frees NF-kB from I-Kappa-B and marks it for degradation via ubiquination. IKK beta has been shown to activate NF-kB and phosphorylate IKB alpha and beta. Phosphorylation of 2 sites at the activation loop of IKK beta is essential for activation of IKK by TNF and IL1. Once activated, IKK beta autophosphorylates which in turn decreases IKK activity and prevents prolonged activation of the inflammatory response. Additionally, IKK beta activity can also be regulated by MEKK1.

Synonyms:

I-kappa-B-kinase beta, IKK-beta, IKK-B, I-kappa-B kinase 2, IKK2, NFKB1KB

Product images:

Heart: Formalin-Fixed Paraffin-Embedded (FFPE)



Thymus: Formalin-Fixed Paraffin-Embedded (FFPE)