

Product datasheet for **AP09014PU-N**

Collagen I (COL1A1) Rabbit Polyclonal Antibody

Product data:

Product Type:	Primary Antibodies
Applications:	ELISA, IHC, IP, WB
Recommended Dilution:	ELISA: 1/5000 - 1/50000. Immunohistochemistry on Paraffin Sections: 2.5 µg/ml. Immunoprecipitation. Western Blot: 1/5000 - 1/50000.
Reactivity:	Bovine, Human, Mouse, Rat, Mammalian
Host:	Rabbit
Clonality:	Polyclonal
Immunogen:	Collagen Type I from Human and Bovine Placenta
Specificity:	This antibody recognizes Collagen type I.
Formulation:	0.125M Sodium Borate, 0.075M Sodium Chloride, 0.005M EDTA, pH 8.0 containing 0.01% Sodium Azide as preservative. State: Aff - Purified State: Liquid purified Ig fraction.
Concentration:	lot specific
Purification:	Immunoaffinity Chromatography.
Conjugation:	Unconjugated
Storage:	Store the antibody undiluted at 2-8°C for one month or (in aliquots) at -20°C for longer. Avoid repeated freezing and thawing.
Stability:	Shelf life: one year from despatch.
Gene Name:	collagen type I alpha 1
Database Link:	Entrez Gene 12842 Mouse Entrez Gene 29393 Rat Entrez Gene 1277 Human P02452



[View online »](#)

Background:

Collagens are highly conserved throughout evolution and are characterised by an uninterrupted "Glycine X Y" triplet repeat that is a necessary part of the triple helical structure. Type I Collagen (95 kDa) is found in bone, cornea, skin and tendon. Mutations in the encoding gene are associated with osteogenesis imperfecta, Ehlers Danlos syndrome, and idiopathic osteoporosis. Reciprocal translocations between chromosomes 17 and 22, where this gene and the gene for Platelet-derived growth factor beta are located, are associated with a particular type of skin tumor called dermatofibrosarcoma protuberans, resulting from unregulated expression of the growth factor.

Synonyms:

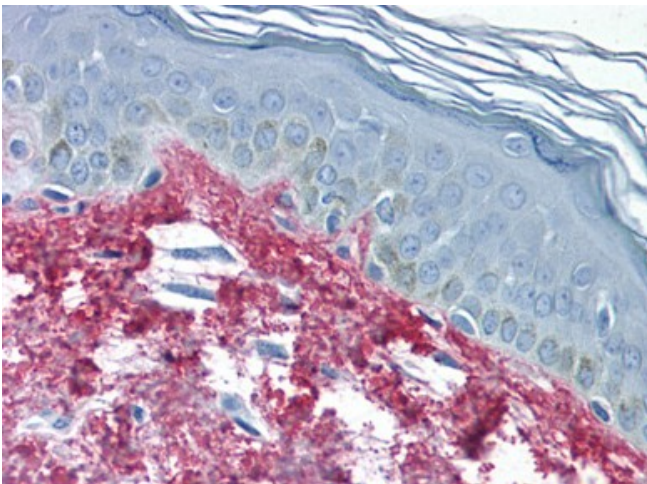
COL1A1, COL1A2, Alpha-1 type I collagen, Alpha-2 type I collagen

Protein Families:

Druggable Genome

Protein Pathways:

ECM-receptor interaction, Focal adhesion

Product images:


Skin: Formalin-Fixed Paraffin-Embedded (FFPE) using Collagen I antibody.