

## Product datasheet for **AP08990PU-N**

### Granzyme B (GZMB) (N-term) Rabbit Polyclonal Antibody

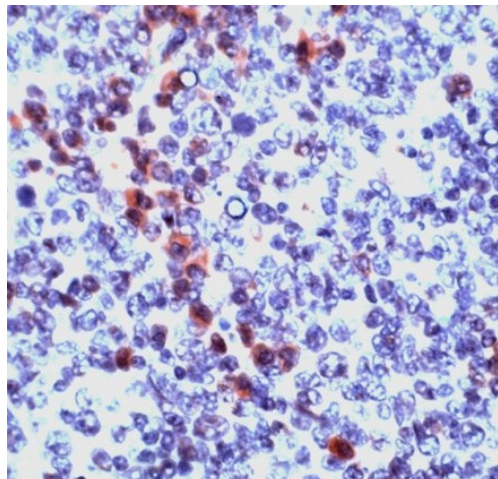
#### Product data:

Product Type:	Primary Antibodies
Applications:	IHC
Recommended Dilution:	<b>Immunohistochemistry on Paraffin Sections:</b> 1/100.
Reactivity:	Human, Mouse, Rat
Host:	Rabbit
Clonality:	Polyclonal
Immunogen:	A synthetic peptide from N-terminus of human Granzyme B
Specificity:	This antibody reacts to Granzyme B.
Formulation:	10 mM PBS, pH 7.4, BSA, sodium azide State: Aff - Purified State: Liquid purified Ig
Purification:	Immunoaffinity Chromatography
Conjugation:	Unconjugated
Storage:	Store the antibody undiluted at 2-8°C for one month or (in aliquots) at -20°C for longer. Avoid repeated freezing and thawing.
Stability:	Shelf life: one year from despatch.
Gene Name:	granzyme B
Database Link:	<a href="#">Entrez Gene 3002 Human P10144</a>
Background:	Granzyme B is a cysteine protease found in the cytoplasmic lysosome-like granules of cytolytic T lymphocytes (CTL) and natural killer (NK) cells and is required for the induction of target cell lysis. This occurs as part of cell mediated immune responses, and can activate apoptosis in target cells by both caspase dependent and caspase independent mechanisms.
Synonyms:	Granzyme-2, CGL1, CTSSL1, CSPB, CTLA1, CTLA-1, GRB, SECT, Fragmentin-2

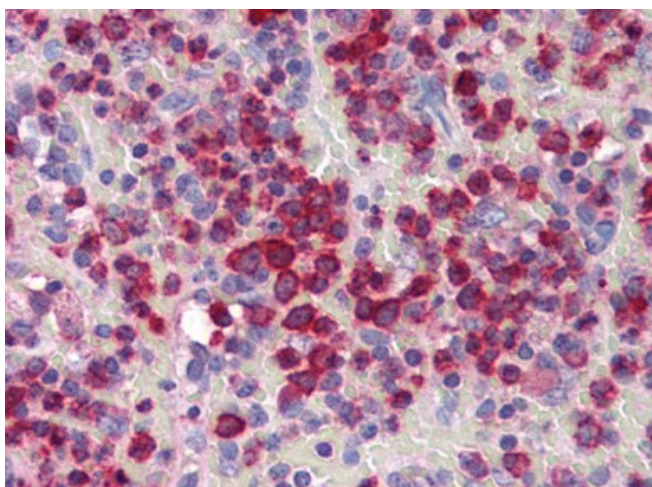


[View online »](#)

**Product images:**



Human tonsil stained with anti-Granzyme B antibody



Spleen: Formalin-Fixed, Paraffin-Embedded (FFPE)