

Product datasheet for **AP08985PU-N**

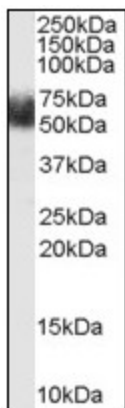
FBXL3 (2-15) Goat Polyclonal Antibody

Product data:

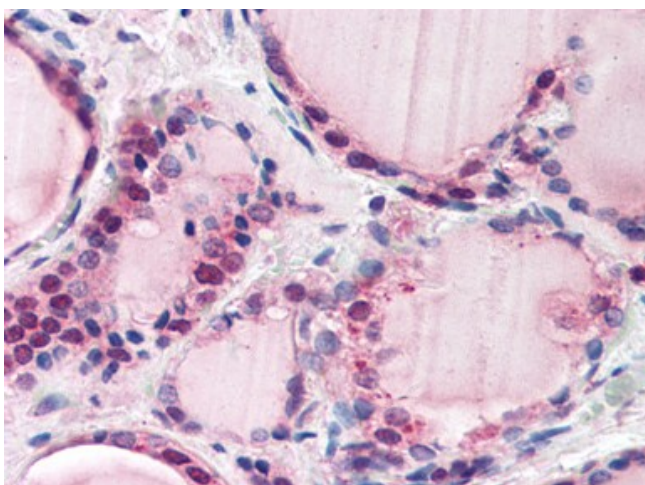
Product Type:	Primary Antibodies
Applications:	ELISA, IHC, WB
Recommended Dilution:	ELISA: 1/32000. Immunohistochemistry on Paraffin Sections: 5 µg/ml. Western Blot: 1 - 3 µg/ml.
Reactivity:	Human, Canine
Host:	Goat
Clonality:	Polyclonal
Immunogen:	Synthetic peptide from N-terminus of human FBXL3
Specificity:	This antibody reacts to F-box And Leucine-rich Repeat Protein 3 (FBXL3) at aa 2-15.
Formulation:	Tris saline buffer, pH 7.3, 0.5% BSA, 0.02% sodium azide State: Aff - Purified State: Liquid purified Ig
Concentration:	lot specific
Purification:	Immunoaffinity Chromatography
Conjugation:	Unconjugated
Storage:	Store the antibody undiluted at 2-8°C for one month or (in aliquots) at -20°C for longer. Avoid repeated freezing and thawing.
Stability:	Shelf life: one year from despatch.
Gene Name:	F-box and leucine-rich repeat protein 3
Database Link:	Entrez Gene 26224 Human Q9UKT7
Background:	FBXL3 is a member of the F-box protein family which is characterized by an approximately 40 amino acid motif, the F-box. The F-box proteins constitute one of the four subunits of ubiquitin protein ligase complex called SCFs (SKP1-cullin-F-box), which function in phosphorylation-dependent ubiquitination.
Synonyms:	FBL3A, FBXL3A



[View online »](#)

Product images:

Antibody (1 ug/ml) staining of Human Adipose lysate (35 ug protein in RIPA buffer). Primary incubation was 1 hour. Detected by chemiluminescence.



Thyroid: Formalin-Fixed, Paraffin-Embedded (FFPE)