

Product datasheet for **AP08956PU-N**

Axin 1 (AXIN1) (850-862) Goat Polyclonal Antibody

Product data:

Product Type:	Primary Antibodies
Applications:	ELISA, IHC
Recommended Dilution:	ELISA: 1/128000. Immunohistochemistry on Paraffin Sections: 3.75 µg/ml.
Reactivity:	Human, Mouse, Rat, Canine, Bovine, Bat, Equine, Hamster, Monkey, Zebrafish
Host:	Goat
Isotype:	IgG
Clonality:	Polyclonal
Immunogen:	Synthetic peptide from C-terminus of Human AXIN1
Specificity:	This antibody recognizes Axin 1 (AXIN1) at aa 850-862. It is expected to recognise both reported isoforms.
Formulation:	Tris-Saline, pH 7.3 containing 0.02% Sodium Azide as preservative and 0.5% BSA as stabilizer State: Aff - Purified State: Liquid purified Ig fraction
Concentration:	lot specific
Purification:	Immunoaffinity Chromatography
Conjugation:	Unconjugated
Storage:	Store the antibody undiluted at 2-8°C for one month or (in aliquots) at -20°C for longer. Avoid repeated freezing and thawing.
Stability:	Shelf life: one year from despatch.
Gene Name:	axin 1
Database Link:	Entrez Gene 8312 Human O15169



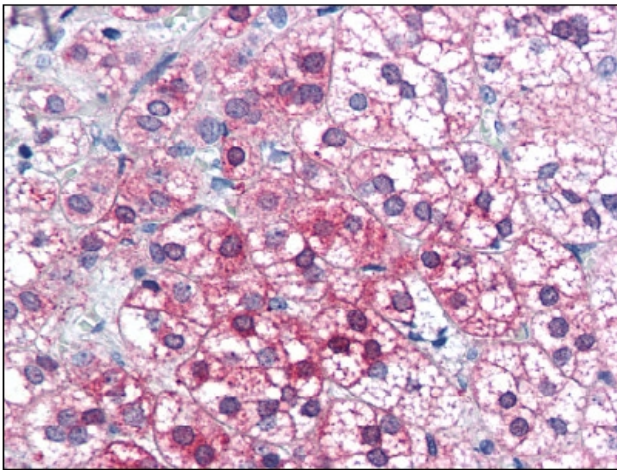
[View online »](#)

Background:

Axin-1 (Axis inhibition protein 1) and Axin-2 are multidomain scaffold proteins that negatively regulate Wnt signaling. Axin-1 interacts with APC, GSK3-beta, Dvl and beta-Catenin and promotes the GSK3-beta-mediated phosphorylation and subsequent degradation of beta-Catenin (1,2). Upon stimulation of cells with Wnt, Axin1 is recruited to the membrane by phosphorylated LRP5/6, a process that is believed to be crucial for activation of Wnt signaling (3,4). In addition to its role in the Wnt signaling pathway, Axin1 forms a complex with MEK1 and activates c-Jun amino-terminal kinase (JNK/SAPK) (5). Axin2 (also known as Conductin or Axil) can functionally substitute Axin1 in mice (6). Axin-2 itself is a direct target of the Wnt signaling pathway and therefore serves to control the duration and/or intensity of Wnt signaling through a negative feedback loop (7-9).

Synonyms:

AXIN1, AXIN

Product images:

Adrenal: Formalin-Fixed, Paraffin-Embedded (FFPE)