

Product datasheet for **AP08944PU-N**

CARD15 (NOD2) (C-term) Rabbit Polyclonal Antibody

Product data:

Product Type:	Primary Antibodies
Applications:	ELISA, IF, IHC, WB
Recommended Dilution:	ELISA. Immunocytochemistry: 10 µg/ml. Immunohistochemistry on Paraffin Sections: 3 µg/ml. Western Blot: 2 - 4 µg/ml.
Reactivity:	Human
Host:	Rabbit
Isotype:	IgG
Clonality:	Polyclonal
Immunogen:	Synthetic peptide corresponding to 14 amino acids at the carboxy terminus of Human NOD2
Specificity:	This antibody recognizes NOD2 Protein (CARD15) at C-Terminus.
Formulation:	PBS containing 0.02% Sodium Azide as preservative State: Aff - Purified State: Liquid purified Ig fraction
Concentration:	lot specific
Purification:	Immunoaffinity Chromatography
Conjugation:	Unconjugated
Storage:	Store the antibody undiluted at 2-8°C for one month or (in aliquots) at -20°C for longer. Avoid repeated freezing and thawing.
Stability:	Shelf life: one year from despatch.
Gene Name:	nucleotide binding oligomerization domain containing 2
Database Link:	Entrez Gene 64127 Human Q9HC29



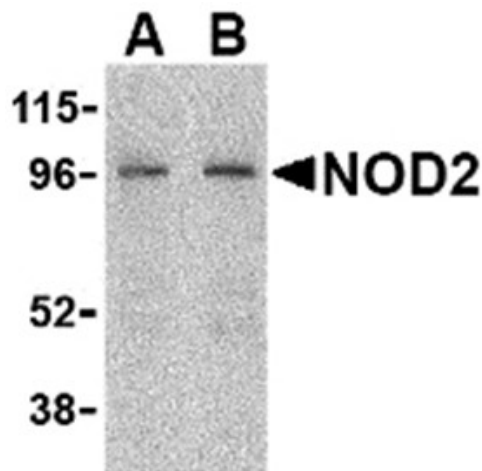
[View online »](#)

Background:

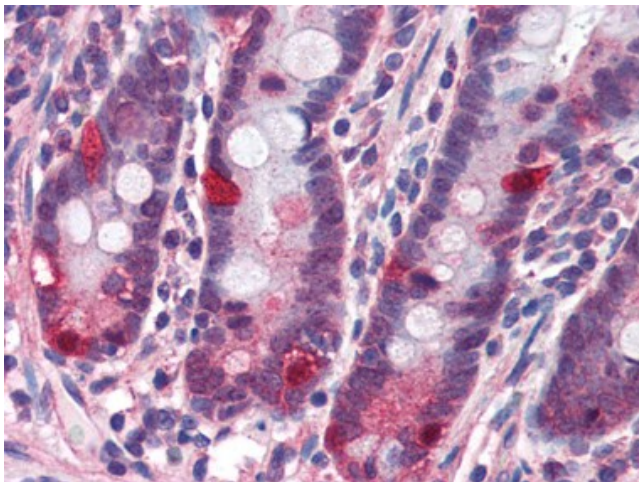
CARD15 (Nod2) is a member of the Nod1/Apaf-1 family of intracellular proteins that contain an N-terminal caspase recruitment domain (CARD), a centrally located nucleotide-binding domain (NBD), and a C-terminal regulatory domain. CARD15 induces NF-kappa-B via RICK (CARDIAK, RIP2) and IKK-gamma. It also confers responsiveness to intracellular bacterial lipopolysaccharides (LPS). Unlike Nod1, this homologue is primarily expressed in monocytes. Defects in CARD15 are associated with Blau Syndrome (BS) and Crohn's Disease (CD), and are a cause of susceptibility to ulcerative colitis.

Synonyms:

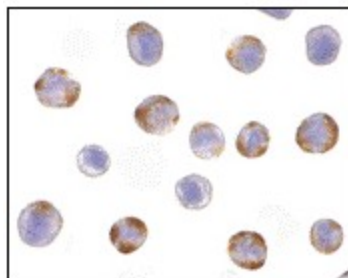
IBD1

Product images:

Western blot analysis of NOD2 in HeLa cell lysate with NOD2 antibody at (A) 2 and (B) 4 ug/ml.



Small intestine: Formalin-Fixed, Paraffin-Embedded (FFPE)



Immunocytochemistry of NOD2 in HeLa cells with NOD2 antibody at 10 ug/ml.