

Product datasheet for **AP08942PU-N**

IL27 (center) Rabbit Polyclonal Antibody

Product data:

Product Type:	Primary Antibodies
Applications:	ELISA, IHC, WB
Recommended Dilution:	ELISA. Immunohistochemistry on Paraffin Sections: 5 µg/ml. Western Blot: 2 - 4 µg/ml.
Reactivity:	Human, Mouse
Host:	Rabbit
Isotype:	IgG
Clonality:	Polyclonal
Immunogen:	Synthetic peptide - KLH conjugated corresponding to 14 amino acids from near the center of Human IL27
Specificity:	This antibody recognizes Interleukin-27 (IL27) near center.
Formulation:	PBS containing 0.02% Sodium Azide as preservative State: Aff - Purified State: Liquid purified Ig fraction
Concentration:	lot specific
Purification:	Immunoaffinity Chromatography
Conjugation:	Unconjugated
Storage:	Store the antibody undiluted at 2-8°C for one month or (in aliquots) at -20°C for longer. Avoid repeated freezing and thawing.
Stability:	Shelf life: one year from despatch.
Gene Name:	interleukin 27
Database Link:	Entrez Gene 246778 Human Q8NEV9



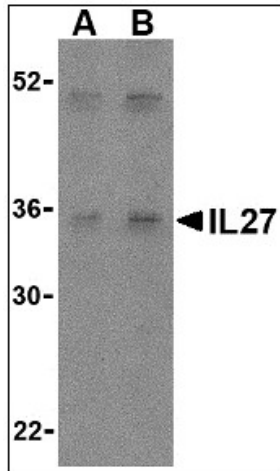
[View online »](#)

Background:

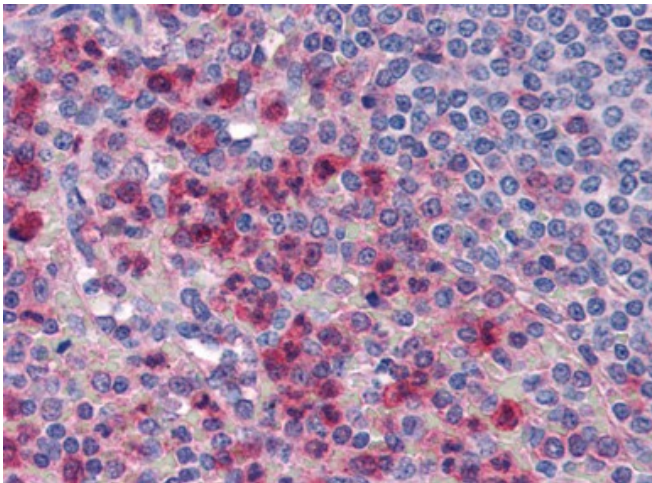
IL27 is a recently discovered member of the IL6/IL12 family of proinflammatory and immunoregulatory cytokines. It exists as a heterodimer composed of the p40-related protein EB13 and an IL12 p35-related protein termed p28. IL27 is produced after activation by antigen-presenting cells and induces proliferation of naive but not memory CD4+ T-cells. It acts by binding to its receptor WSX-1 and gp130 which results in the activation of a Jak/STAT signaling cascade, suggesting the IL27 is involved in the regulation of immune processes.

Synonyms:

IL-27 subunit alpha, IL27-A, p28, IL30, IL-30, Interleukin-30

Product images:

Western blot analysis of IL-27 in Daudi lysate with IL-27 antibody at (A) 2 and (B) 4 ug/ml.



Spleen, neutrophils: Formalin-Fixed, Paraffin-Embedded (FFPE)