

Product datasheet for **AP08940PU-N**

Collagen IV (COL4A1) Rabbit Polyclonal Antibody

Product data:

Product Type:	Primary Antibodies
Applications:	ELISA, IF, IHC, IP, WB
Recommended Dilution:	ELISA. Immunofluorescence. Immunohistochemistry on Paraffin Sections: 2.5 µg/ml. Immunoprecipitation. Western Blot.
Reactivity:	Bovine, Human, Mammalian
Host:	Rabbit
Isotype:	IgG
Clonality:	Polyclonal
Immunogen:	Collagen Type IV from Human and Bovine placenta.
Specificity:	This antibody reacts with most Mammalian Type IV Collagens and has negligible cross-reactivity with type I, II, III, V, or VI Collagens.
Formulation:	0.125M Sodium Borate, 0.075M Sodium Chloride, 0.005M EDTA, pH 8.0 with 0.01% Sodium Azide as preservative. State: Aff - Purified State: Liquid purified Ig fraction.
Concentration:	lot specific
Purification:	Immunoaffinity Chromatography.
Conjugation:	Unconjugated
Storage:	Store vial at 2-8°C prior to opening. This product is stable at 2-8°C as an undiluted liquid. For extended storage, mix with an equal volume of glycerol, aliquot contents and freeze at -20°C or below. Dilute only prior to immediate use. Avoid repeated freezing and thawing.
Stability:	Shelf life: one year from despatch.
Gene Name:	collagen type IV alpha 1 chain



[View online »](#)

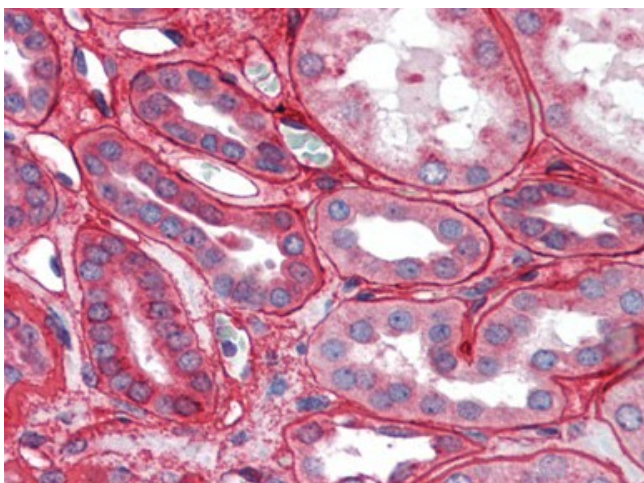
Database Link: [Entrez Gene 1282 Human P02462](#)

Background: Collagens are highly conserved throughout evolution and are characterized by an uninterrupted "Glycine-X-Y" triplet repeat that is a necessary part of the triple helical structure. For these reasons, it is often extremely difficult to generate antibodies with specificities to collagens. The development of type specific antibodies is dependent on NON-DENATURED three-dimensional epitopes. Collagens are extensively purified for immunization from human and bovine placenta and cartilage by limited pepsin digestion and selective salt precipitation. This preparation results in a native conformation of the protein. Antibodies are isolated from rabbit antiserum and are extensively cross-adsorbed by immunoaffinity purification to produce 'type' specific antibodies. Greatly diminished reactivity and selectivity of these antibodies will result if denaturing and reducing conditions are used for SDS-PAGE and immunoblotting.

Synonyms: COL4A1

Protein Pathways: ECM-receptor interaction, Focal adhesion, Pathways in cancer, Small cell lung cancer

Product images:



Kidney: Formalin-Fixed Paraffin-Embedded (FFPE)