

## Product datasheet for **AP08929PU-N**

### TRIM25 Rabbit Polyclonal Antibody

#### Product data:

Product Type:	Primary Antibodies
Applications:	ELISA, IF, IHC, WB
Recommended Dilution:	<b>ELISA.</b> <b>Immunocytochemistry:</b> 20 µg/ml. <b>Immunohistochemistry on Paraffin Sections:</b> 10 µg/ml. <b>Western Blot:</b> 1 - 2 µg/ml.
Reactivity:	Human, Mouse
Host:	Rabbit
Isotype:	IgG
Clonality:	Polyclonal
Immunogen:	Synthetic peptide
Specificity:	This antibody reacts to Zinc Finger Protein 147.
Formulation:	PBS containing 0.02% sodium azide State: Aff - Purified State: Liquid purified Ig
Concentration:	lot specific
Purification:	Immunoaffinity Chromatography
Conjugation:	Unconjugated
Storage:	Store the antibody undiluted at 2-8°C for one month or (in aliquots) at -20°C for longer. Avoid repeated freezing and thawing.
Stability:	Shelf life: one year from despatch.
Gene Name:	tripartite motif containing 25
Database Link:	<a href="#">Entrez Gene 7706 Human Q14258</a>



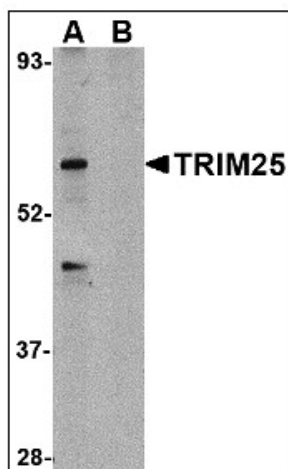
[View online »](#)

**Background:**

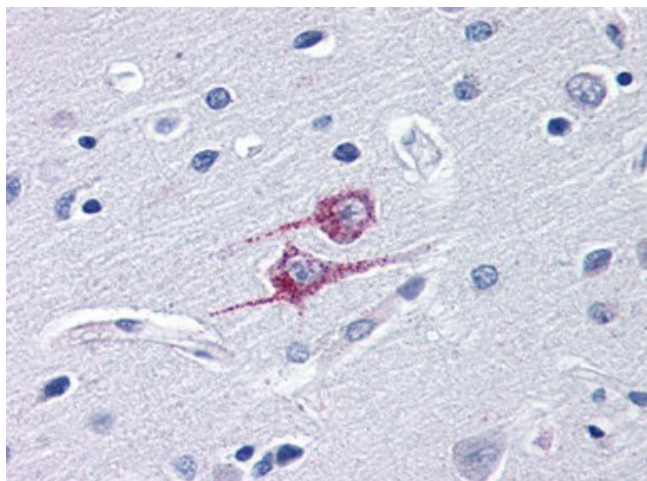
The protein encoded by this gene is a member of the tripartite motif (TRIM) family. The TRIM motif includes three zinc binding domains, a RING, a B box type 1 and a B box type 2, and a coiled coil region. The protein localizes to the cytoplasm. The presence of potential DNA binding and dimerization transactivation domains suggests that this protein may act as a transcription factor, similar to several other members of the TRIM family. Expression of the gene is upregulated in response to estrogen, and it is thought to mediate estrogen actions in breast cancer as a primary response gene.

**Synonyms:**

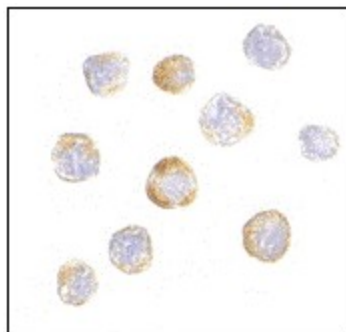
ZNF147, EFP, RING finger protein 147

**Product images:**

Western blot analysis of TRIM25 in HeLa cell lysate in (A) the absence and (B) presence of blocking peptide with TRIM25 antibody at 1 ug/ml.



Brain, cortex: Formalin-Fixed, Paraffin-Embedded (FFPE)



Immunocytochemistry of TRIM25 in HeLa cells with TRIM25 antibody at 20 ug/ml.