

## Product datasheet for **AP08915PU-N**

### **PDE11A (455-468) Goat Polyclonal Antibody**

#### **Product data:**

Product Type:	Primary Antibodies
Applications:	ELISA, IHC, WB
Recommended Dilution:	<b>ELISA:</b> 1/2000. <b>Immunohistochemistry on Paraffin Sections:</b> 10 µg/ml. <b>Western Blot:</b> 0.5 - 1.5 µg/ml.
Reactivity:	Canine, Human, Mouse, Rat, Bovine, Bat, Monkey, Porcine
Host:	Goat
Isotype:	IgG
Clonality:	Polyclonal
Immunogen:	Peptide sequence from the internal region of PDE11A
Specificity:	This antibody reacts to Phosphodiesterase 11A (PDE11A) at 455-468. The antibody is expected to recognise all four reported isoforms (NP_058649.3 ; NP_001070665.1; NP_001070826.1; NP_001070664.1).
Formulation:	Tris saline buffer, pH 7.3, 0.5% BSA, 0.02% sodium azide State: Aff - Purified State: Liquid purified Ig
Concentration:	lot specific
Purification:	Immunoaffinity Chromatography
Conjugation:	Unconjugated
Storage:	Store the antibody undiluted at 2-8°C for one month or (in aliquots) at -20°C for longer. Avoid repeated freezing and thawing.
Stability:	Shelf life: one year from despatch.
Gene Name:	phosphodiesterase 11A
Database Link:	<a href="#">Entrez Gene 50940 Human Q9HCR9</a>



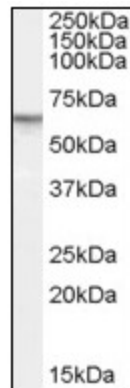
[View online »](#)

**Background:**

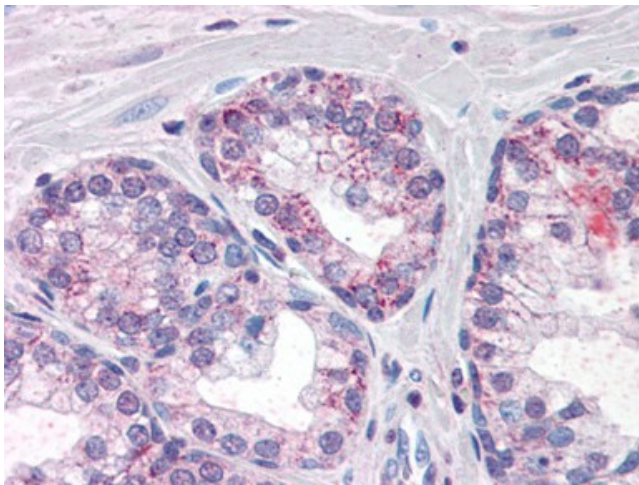
One of the many phosphodiesterases that compartmentalize and hydrolyze cAMP and cGMP into AMP and GMP is Phosphodiesterase type 11. The human PDE11A contains an open reading frame encoding a 490 amino acid protein (55-56 kDa). The PDE11A has an N terminus GAF domain homologous to other signaling molecule as found in PDE2, PDE5, PDE6, PDE10, which potentially represents an allosteric cGMP and other small signaling molecules. PDE11A hydrolyzes both cGMP and cAMP; it is sensitive to non selective PDE inhibitor IBMX as well as zaprinast and dipyrimadole inhibitors that are generally selective for cGMP specific enzymes. PDE11A expression is diverse and is found in high levels in skeletal muscle, prostate, kidney, liver, pituitary and testis. There are several isoforms known: Isoform 1 is present in prostate, pituitary, heart and liverbut not in testis or in penis. Isoform 2 is believed to be expressed in testis and Isoform 4 in the adrenal cortex.

**Synonyms:**

Phosphodiesterase 11A, PDE11A1, PDE11A2, PDE11A3, PDE11A4

**Product images:**

Antibody (1 ug/ml) staining of Human Prostate lysate (35 ug protein in RIPA buffer). Primary incubation was 1 hour. Detected by chemiluminescence.



Prostate: Formalin-Fixed, Paraffin-Embedded (FFPE)