

Product datasheet for **AP08913PU-N**

SMAD9 (166-179) Goat Polyclonal Antibody

Product data:

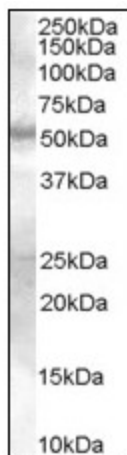
Product Type:	Primary Antibodies
Applications:	ELISA, IHC, WB
Recommended Dilution:	ELISA: 1/64000. Immunohistochemistry on Paraffin Sections: 5 µg/ml. Western Blot: 0.3 - 1 µg/ml.
Reactivity:	Canine, Human, Mouse, Rat, Bovine, Bat, Chicken, Equine, Hamster, Monkey, Porcine, Rabbit
Host:	Goat
Isotype:	IgG
Clonality:	Polyclonal
Immunogen:	Synthetic peptide from an internal region of human SMAD9
Specificity:	This antibody reacts to SMAD, Mothers Against DPP Homolog 9 (SMAD9) at aa 166-179.
Formulation:	Tris saline buffer, pH 7.3 containing 0.5% BSA as stabilizer and 0.02% sodium azide as preservative State: Aff - Purified State: Liquid purified Ig
Concentration:	lot specific
Purification:	Immunoaffinity Chromatography
Conjugation:	Unconjugated
Storage:	Store the antibody undiluted at 2-8°C for one month or (in aliquots) at -20°C for longer. Avoid repeated freezing and thawing.
Stability:	Shelf life: one year from despatch.
Gene Name:	SMAD family member 9
Database Link:	Entrez Gene 4093 Human O15198
Background:	SMAD9 is a member of the MAD-related family of molecules. MAD-related proteins are a recently identified family of intracellular proteins that are thought to be essential components in the signaling pathways of the serine/threonine kinase receptors of the transforming growth factor beta superfamily.



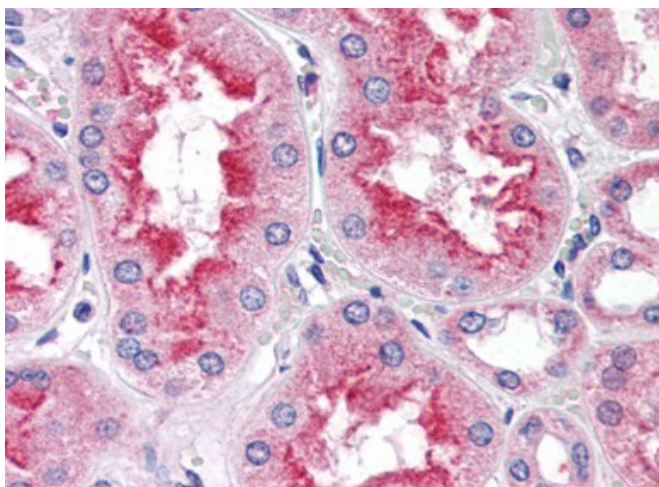
[View online »](#)

Synonyms: SMAD family member 9, SMAD-9, SMAD 9, MADH9, MAD homolog 9

Product images:



Antibody (0.3 ug/ml) staining of Human Skin lysate (35 ug protein in RIPA buffer). Primary incubation was 1 hour. Detected by chemiluminescence.



Kidney: Formalin-Fixed, Paraffin-Embedded (FFPE)