

Product datasheet for **AP08912PU-N**

Iba1 (AIF1) (149-161) Goat Polyclonal Antibody

Product data:

Product Type:	Primary Antibodies
Applications:	ELISA, IHC, WB
Recommended Dilution:	ELISA: 1/128000. Immunohistochemistry on Paraffin Sections: 5 µg/ml. Western Blot: 0.3 - 1 µg/ml.
Reactivity:	Hamster, Human, Monkey, Mouse, Porcine, Rat, Bovine, Equine, Goat, Rabbit
Host:	Goat
Isotype:	IgG
Clonality:	Polyclonal
Immunogen:	Synthetic peptide from C-terminus of Human AIF1 (NP_116573.1; NP_001614.3). Epitope: aa 149-161
Specificity:	This antibody recognizes Allograft Inflammatory Factor-1 (AIF1) at aa 149-161. The antibody is expected to recognize isoform 1 (NP_116573.1) and isoform 3 (NP_001614.3).
Formulation:	Tris saline buffer, pH ~7.3 State: Aff - Purified State: Liquid purified Ig fraction Stabilizer: 0.5% BSA Preservative: 0.02% Sodium Azide
Concentration:	lot specific
Purification:	Immunoaffinity Chromatography
Conjugation:	Unconjugated
Storage:	Upon receipt, store (in aliquots) at -20°C to -80°C. Avoid repeated freezing and thawing.
Stability:	Shelf life: one year from despatch.
Gene Name:	allograft inflammatory factor 1
Database Link:	Entrez Gene 199 Human P55008



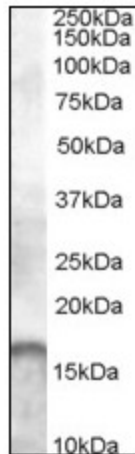
[View online »](#)

Background:

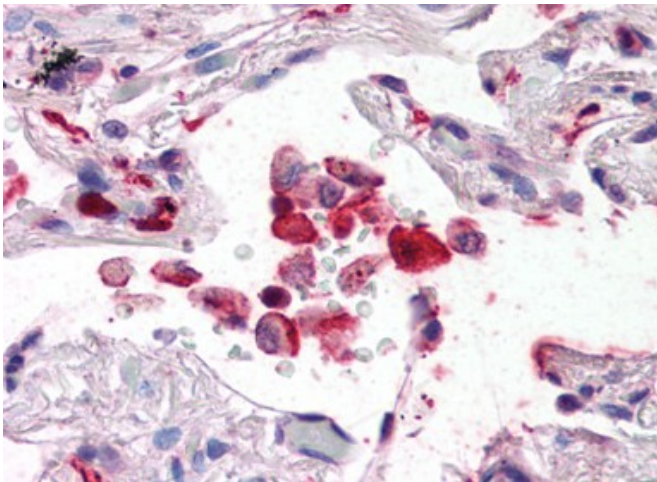
Allograft Inflammatory Factor-1 (AIF1) or ionized calcium-binding adaptor molecule 1 (Iba1) is expressed selectively in microglia/macrophages and is a Ca²⁺-binding peptide produced by activated monocytes and microglial cells. It has been suggested that AIF1 expression is associated with chronic inflammatory processes. AIF1 is expressed by activated monocytes and might participate in a variety of pathogenic processes in the mammalian brain and in chronic transplant rejection. It has been shown to be expressed early and persistently in chronically rejecting cardiac allografts but not in cardiac syngrafts and host hearts.

Synonyms:

AIF-1, Protein G1, IBA1, Allograft inflammatory factor 1

Product images:


AIF1 Antibody (0.5 ug/ml) staining of Rat Brain lysate (35ug protein in RIPA buffer). Primary incubation was 1 hour. Detected by chemiluminescence.



Formalin-Fixed, Paraffin-Embedded Human Lung staining using AIF1 Antibody at 5 ug/ml after heat-induced antigen retrieval.