

Product datasheet for **AP08901PU-N**

Rapsyn (RAPSN) (399-412) Rabbit Polyclonal Antibody

Product data:

Product Type:	Primary Antibodies
Applications:	ELISA, IHC, WB
Recommended Dilution:	ELISA. Immunohistochemistry on Paraffin Sections: 10 - 20 µg/ml. Western Blot: 1 µg/ml.
Reactivity:	Human, Mouse, Rat
Host:	Rabbit
Isotype:	IgG
Clonality:	Polyclonal
Immunogen:	Synthetic peptide from C-Terminus (aa 399-412) of human KDM5C
Specificity:	This antibody detects RAPSN at C-term.
Formulation:	PBS, 0.01% sodium azide, 50% glycerol State: Aff - Purified State: Liquid Ig fraction
Concentration:	lot specific
Purification:	Affinity chromatography
Conjugation:	Unconjugated
Storage:	Store undiluted at 2-8°C for one month or (in aliquots) at -20°C for longer. Avoid repeated freezing and thawing.
Stability:	Shelf life: one year from despatch.
Gene Name:	receptor associated protein of the synapse
Database Link:	Entrez Gene 5913 Human Q13702
Background:	This gene encodes a member of a family of proteins that are receptor associated proteins of the synapse. The encoded protein contains a conserved cAMP-dependent protein kinase phosphorylation site, and plays a critical role in clustering and anchoring nicotinic acetylcholine receptors at synaptic sites by linking the receptors to the underlying postsynaptic cytoskeleton, possibly by direct association with actin or spectrin.

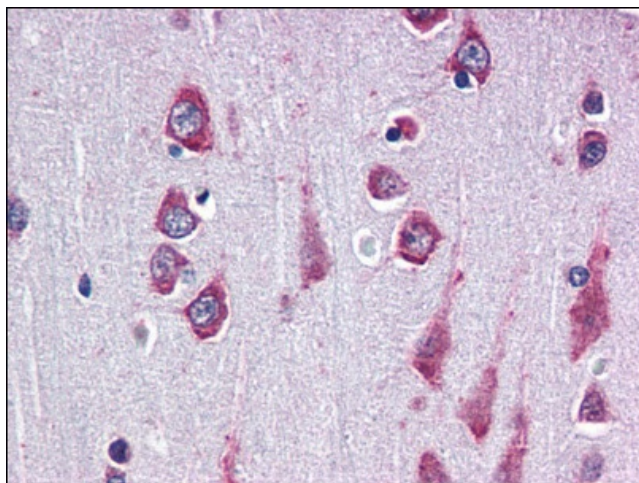


[View online »](#)

Synonyms: RAPsyn

Note: Store the antibody at 2 - 8 °C up to one month or (in aliquots) at -20 °C for longer. Avoid repeated freezing and thawing.
Shelf life: one year from despatch.

Product images:



Brain, cortex: Formalin-Fixed, Paraffin-Embedded (FFPE)