

Product datasheet for **AP08900PU-N**

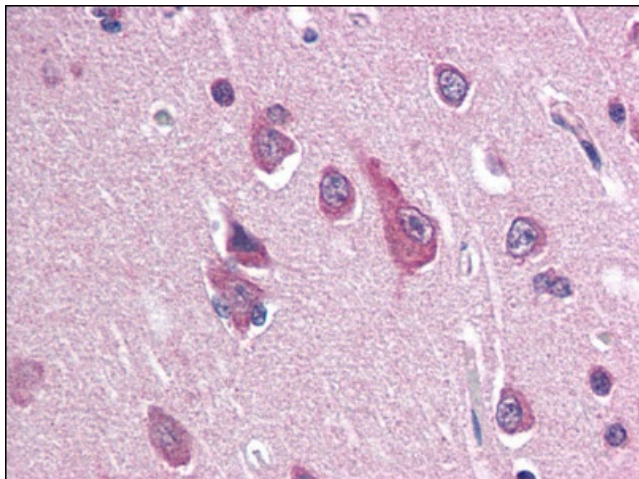
SCN2B (N-term) Rabbit Polyclonal Antibody

Product data:

Product Type:	Primary Antibodies
Applications:	ELISA, IHC, WB
Recommended Dilution:	ELISA. Immunohistochemistry on Paraffin Sections: 10 - 20 µg/ml. Western Blot: 1 µg/ml.
Reactivity:	Rat, Human
Host:	Rabbit
Isotype:	IgG
Clonality:	Polyclonal
Immunogen:	Synthetic peptide corresponding to N-terminal residues of rat Scn2b (Sodium channel beta-2 subunit)
Specificity:	This antibody detects SCN2B at N-term.
Formulation:	PBS, 0.01% sodium azide, 50% glycerol State: Aff - Purified State: Liquid Ig fraction
Concentration:	lot specific
Purification:	Immunoaffinity chromatography
Conjugation:	Unconjugated
Storage:	Store the antibody at 2 - 8 °C up to one month or (in aliquots) at -20 °C for longer. Avoid repeated freezing and thawing.
Stability:	Shelf life: one year from despatch.
Gene Name:	sodium voltage-gated channel beta subunit 2
Database Link:	Entrez Gene 6327 Human O60939
Synonyms:	UNQ326/PRO386, Gm183



[View online »](#)

Product images:

Brain, cortex: Formalin-Fixed, Paraffin-Embedded (FFPE)