

Product datasheet for **AP08894PU-N**

Triosephosphate isomerase (TPI1) (274-286) Goat Polyclonal Antibody

Product data:

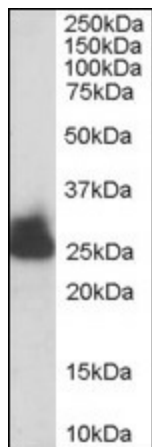
Product Type:	Primary Antibodies
Applications:	ELISA, IHC, WB
Recommended Dilution:	ELISA: 1/16000. Immunohistochemistry on Paraffin Sections: 5 µg/ml. Western Blot: 0.01 - 0.03 µg/ml.
Reactivity:	Canine, Human, Mouse, Rat, Bovine, Bat, Equine, Hamster, Monkey, Rabbit
Host:	Goat
Isotype:	IgG
Clonality:	Polyclonal
Immunogen:	Synthetic peptide from C-terminus of human TPI1
Specificity:	This antibody detects Triosephosphate Isomerase (TPI1) at aa 274-286.
Formulation:	Tris saline buffer, pH 7.3, 0.5% BSA, 0.02% sodium azide State: Aff - Purified State: Liquid Ig fraction
Concentration:	lot specific
Purification:	Immunoaffinity chromatography
Conjugation:	Unconjugated
Storage:	Store the antibody at 2 - 8 °C up to one month or (in aliquots) at -20 °C for longer. Avoid repeated freezing and thawing.
Stability:	Shelf life: one year from despatch.
Gene Name:	triosephosphate isomerase 1
Database Link:	Entrez Gene 7167 Human P60174
Background:	TPI1 / TPI encodes an enzyme, consisting of two identical proteins, which catalyzes the isomerization of glyceraldehydes 3-phosphate (G3P) and dihydroxy-acetone phosphate (DHAP) in glycolysis and gluconeogenesis. Mutations in this gene are associated with triosephosphate isomerase deficiency. Pseudogenes have been identified on chromosomes 1, 4, 6 and 7. Alternative splicing results in multiple transcript variants.



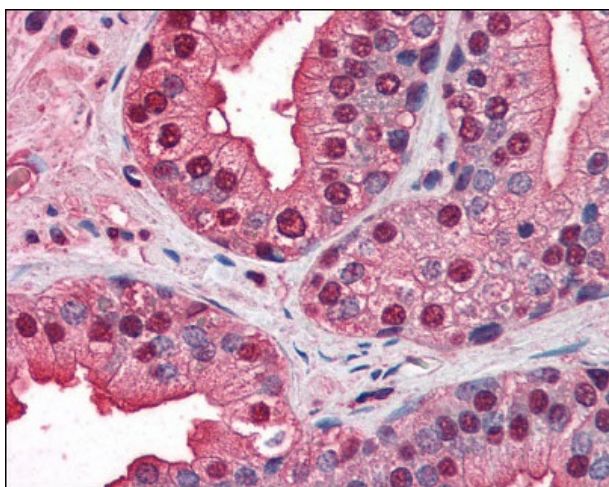
[View online »](#)

Synonyms: Triose-phosphate isomerase, TPI, TIM

Product images:



Antibody staining (0.003 $\mu\text{g}/\text{ml}$) of human liver lysate (RIPA buffer, 30 μg total protein per lane). Primary incubated for 1 hour. Detected by western blot using chemiluminescence.



Prostate: Formalin-Fixed, Paraffin-Embedded (FFPE)