

Product datasheet for **AP08883PU-N**

MIF (103-115) Goat Polyclonal Antibody

Product data:

Product Type:	Primary Antibodies
Applications:	ELISA, IHC, WB
Recommended Dilution:	ELISA: 1/128000. Immunohistochemistry on Paraffin Sections: 2.5 µg/ml. Western Blot: 0.01 - 0.03 µg/ml.
Reactivity:	Human, Mouse, Rat, Monkey
Host:	Goat
Isotype:	IgG
Clonality:	Polyclonal
Immunogen:	Synthetic peptide from C-terminus of Human MIF
Specificity:	This antibody recognizes Macrophage Migration Inhibitory Factor (MIF) at aa 103-115.
Formulation:	Tris saline buffer, pH 7.3 containing 0.5% BSA as stabilizer and 0.02% Sodium Azide as preservative State: Aff - Purified State: Liquid purified IgG fraction
Concentration:	lot specific
Purification:	Immunoaffinity Chromatography
Conjugation:	Unconjugated
Storage:	Store the antibody undiluted at 2-8°C for one month or (in aliquots) at -20°C for longer. Avoid repeated freezing and thawing.
Stability:	Shelf life: one year from despatch.
Gene Name:	macrophage migration inhibitory factor (glycosylation-inhibiting factor)
Database Link:	Entrez Gene 4282 Human P14174



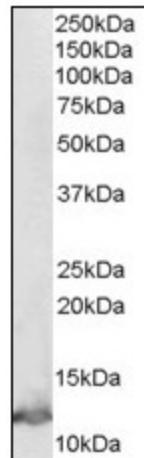
[View online »](#)

Background:

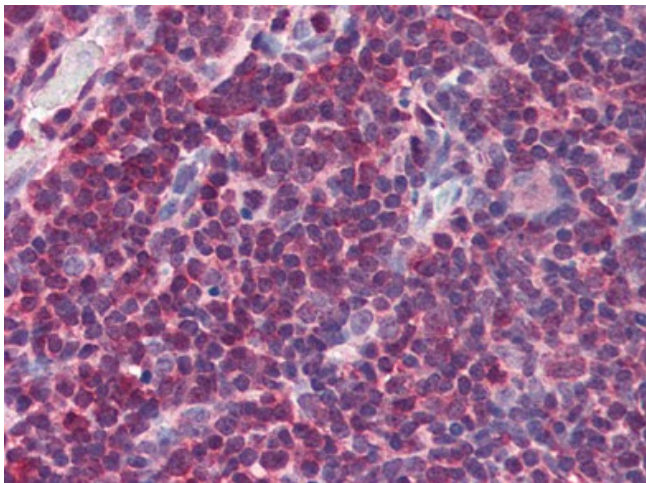
MIF is a proinflammatory cytokine involved in many inflammatory reactions and disorders. MIF (macrophage migration inhibitory factor) was one of the first cytokines to be discovered and was initially described as a T cell-derived factor that inhibits the random migration of macrophages (Weiser 1989). Recently, MIF was rediscovered as a pituitary hormone that act as the counterregulatory hormone for glucocorticoid action within the immune system (Bernhagen 1993, Mitchell 1995). MIF was released from macrophages and T cells in response to physiological concentrations of glucocorticoids. The secreted MIF counter-regulates the immunosuppressive effects of steroids on immune cell activation and cytokine production (Bucala 1998). MIF plays a critical role in the host control of inflammation and immunity. MIF is involved in both autoimmune disorders and tumorigenesis.

Synonyms:

Macrophage migration inhibitory factor, Phenylpyruvate tautomerase, Glycosylation-inhibiting factor, GLIF, MMIF

Product images:

MIF Antibody (0.01ug/ml) staining of Human Thymus lysate (35ug protein in RIPA buffer). Primary incubation was 1 hour. Detected by chemiluminescence.



Thymus: Formalin-Fixed, Paraffin-Embedded (FFPE) using MIF Antibody