

Product datasheet for **AP08870PU-N**

Perilipin 3 (PLIN3) (N-term) Rabbit Polyclonal Antibody

Product data:

Product Type:	Primary Antibodies
Applications:	IHC, WB
Recommended Dilution:	Immunohistochemistry on Paraffin Sections: 5 µg/ml. Western Blot.
Reactivity:	Human, Mouse, Rat
Host:	Rabbit
Isotype:	IgG
Clonality:	Polyclonal
Immunogen:	Synthetic peptide - KLH conjugated corresponding to 14 amino acids from near the amino terminus of Human TIP47
Specificity:	This antibody recognizes Mannose-6-phosphate Receptor Binding Protein 1 (M6PRBP1).
Formulation:	PBS containing 0.02% Sodium Azide as preservative. State: Aff - Purified State: Liquid purified IgG fraction.
Concentration:	lot specific
Purification:	Immunoaffinity Chromatography.
Conjugation:	Unconjugated
Storage:	Store the antibody undiluted at 2-8°C for one month or (in aliquots) at -20°C for longer. Avoid repeated freezing and thawing.
Stability:	Shelf life: one year from despatch.
Gene Name:	perilipin 3
Database Link:	Entrez Gene 10226 Human O60664



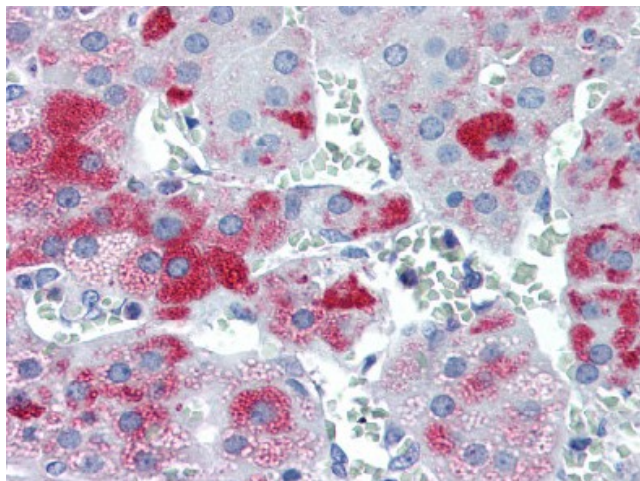
[View online »](#)

Background:

Mannose 6-phosphate receptors (MPRs) deliver lysosomal hydrolase from the Golgi to endosomes and then return to the Golgi complex. M6PRBP1 interacts with the cytoplasmic domains of both cation-independent and cation-dependent MPRs, and is required for endosome-to-Golgi transport. This protein also binds directly to the GTPase RAB9 (RAB9A), a member of the RAS oncogene family. The interaction with RAB9 has been shown to increase the affinity of this protein for its cargo.

Synonyms:

M6PRBP1; PP17; TIP47

Product images:

M6PRBP1 antibody staining of Formalin-Fixed, Paraffin-Embedded (FFPE) Human Adrenal.