

Product datasheet for **AP08829PU-N**

CCR6 (18-46) Goat Polyclonal Antibody

Product data:

Product Type:	Primary Antibodies
Applications:	ELISA, FC, IF, IHC
Recommended Dilution:	ELISA: 1/75000. Flow Cytometry: 1 - 3 µg/10E6 cells. Immunocytochemistry: 1/300. Immunohistochemistry on Paraffin Sections: 5 µg/ml.
Reactivity:	Human, Monkey
Host:	Goat
Isotype:	IgG
Clonality:	Polyclonal
Immunogen:	Synthetic peptide corresponding to amino acids 18-46 of Human CD196/CCR6
Specificity:	This antibody recognizes Human CD196/CCR6 at aa 18-46.
Formulation:	PBS containing 1 mg/ml BSA as stabilizer and 0.09% Sodium Azide as preservative. State: Aff - Purified State: Liquid purified Ig fraction
Concentration:	lot specific
Purification:	Immunoaffinity Chromatography
Conjugation:	Unconjugated
Storage:	Store undiluted at 2-8°C for one month or (in aliquots) at -20°C for longer. Avoid repeated freezing and thawing.
Stability:	Shelf life: one year from despatch.
Gene Name:	C-C motif chemokine receptor 6
Database Link:	Entrez Gene 1235 Human P51684



[View online »](#)

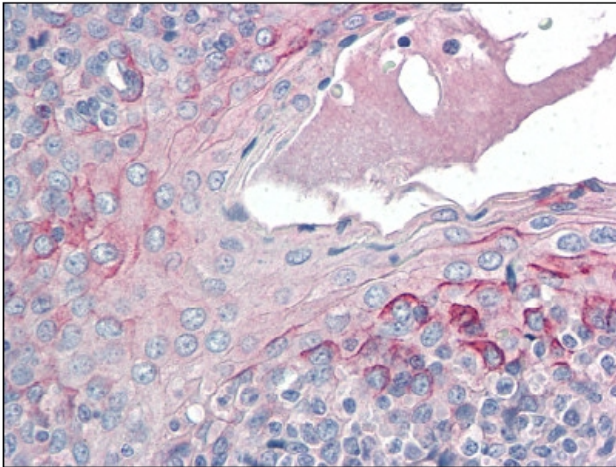
Background:

CCR6 is a member of the beta chemokine receptor family, which is predicted to be a seven transmembrane protein similar to G protein coupled receptors. It is preferentially expressed by immature dendritic cells and memory T cells. The ligand of this receptor is macrophage inflammatory protein 3 alpha (MIP 3 alpha). This receptor has been shown to be important for B lineage maturation and antigen driven B cell differentiation, and it may regulate the migration and recruitment of dendritic and T cells during inflammatory and immunological responses.

CCR6 has been reported to be expressed in intestine, colon, liver, lymph node, spleen, lung, blood, umbilical cord, placenta, skin, and pancreas. It has also been reported to be expressed in lymphocytes, T cells, and B cells.

Synonyms:

C-C chemokine receptor type 6, C-C CKR-6, CC-CKR-6, CCR-6, CKRL3, CMKBR6, GPR29, STRL22, DRY6, GPR-CY4

Product images:

staining CCR6 at 5 ug/ml in paraffin-embedded Human Tonsil by Immunohistochemistry.