

## Product datasheet for **AP08812PU-N**

### Jagged1 (JAG1) (110-125) Rabbit Polyclonal Antibody

#### Product data:

Product Type:	Primary Antibodies
Applications:	ELISA, IF, IHC, WB
Recommended Dilution:	<b>ELISA:</b> 1/2500 - 1/10000. <b>Immunocytochemistry.</b> <b>Immunofluorescence:</b> 1/100 - 1/500. <b>Immunohistochemistry on Paraffin Sections:</b> 5 µg/ml. <b>Western Blot:</b> 1/250 - 1/1000.
Reactivity:	Human, Chimpanzee, Mouse, Rat
Host:	Rabbit
Isotype:	IgG
Clonality:	Polyclonal
Immunogen:	Synthetic peptide corresponding to aa 110-125 of Human Jagged-1 protein.
Specificity:	Recognizes Human Jagged-1 (JAG1).
Formulation:	PBS, pH 7.2 containing 0.01% Sodium Azide as preservative. State: Aff - Purified State: Liquid purified Ig fraction.
Concentration:	lot specific
Purification:	Protein A Chromatography.
Conjugation:	Unconjugated
Storage:	Store the antibody undiluted at 2-8°C for one month or (in aliquots) at -20°C for longer. Avoid repeated freezing and thawing.
Stability:	Shelf life: one year from despatch.
Gene Name:	jagged 1
Database Link:	<a href="#">Entrez Gene 182 Human P78504</a>



[View online »](#)

**Background:**

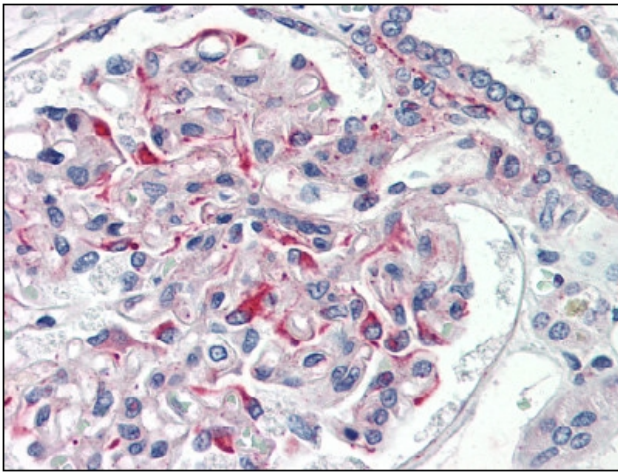
Jagged-1 (JAG1) is a cell surface protein which is one of several ligands that activate Notch and related receptors. JAG1 functions in an embryologically important signaling pathway and has also been shown to play a role in hematopoiesis. JAG1 inhibits proliferation of cd34+ macrophage progenitor cells and a JAG1 gene abnormality may be an aggravating factor in extrahepatic biliary atresia. Activation of NOTCH1 signaling by JAG1 induces monocyte-derived dendritic cell maturation in vitro. JAG1 interaction with NOTCH1 on tumor cells dramatically induces proliferation and inhibition of apoptosis in vitro. Either haploinsufficiency for wild-type JAG1 and/or dominant negative effects produced by mutated JAG1 are responsible for the Alagille syndrome.

**Synonyms:**

Jagged-1, hj1, JAGL1

**Note:**

**Predicted Molecular Weight:** 134 kDa.

**Product images:**

at 5 ug/ml, staining JAG1 in Formalin-Fixed, Paraffin-Embedded Human Kidney tissue by Immunohistochemistry.