

Product datasheet for **AP08803PU-N**

PLTP Rabbit Polyclonal Antibody

Product data:

Product Type:	Primary Antibodies
Applications:	IHC, WB
Recommended Dilution:	Immunohistochemistry on Paraffin Sections: 1/100. Western Blot: 1/200 - 1/1000.
Reactivity:	Human, Mouse
Host:	Rabbit
Isotype:	IgG
Clonality:	Polyclonal
Immunogen:	Synthetic peptide surrounding amino acid 473 of Human PLTP
Specificity:	Recognizes Phospholipid Transfer Protein (PLTP).
Formulation:	PBS containing 1% BSA as stabilizer and 0.02% as Thimerosal as preservative. State: Purified State: Liquid purified Ig fraction.
Concentration:	lot specific
Purification:	Protein G Chromatography.
Conjugation:	Unconjugated
Storage:	Store the antibody at -20°C for Short term or at -70°C for Long term. Avoid repeated freezing and thawing.
Stability:	Shelf life: one year from despatch.
Gene Name:	phospholipid transfer protein
Database Link:	NP_006218.1 Entrez Gene 18830 Mouse Entrez Gene 5360 Human P55058



[View online »](#)

Background: PLTP is one of at least two lipid transfer proteins found in human plasma. This protein transfers phospholipids from triglyceride-rich lipoproteins to high density lipoprotein (HDL). In addition to regulating the size of HDL particles, it may be involved in cholesterol metabolism.

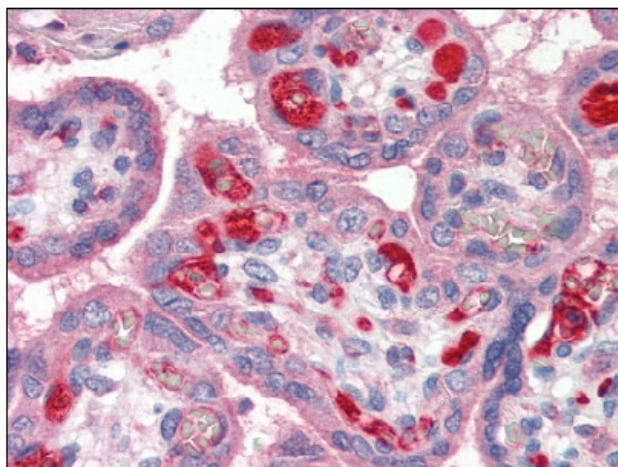
Plasma phospholipid transfer protein (PLTP) plays a central role in regulating plasma HDL levels and distribution of HDL subpopulations. This regulation is evidenced in vivo by markedly reduced plasma HDL levels in PLTP gene knock-out mice. PLTP also facilitates free cholesterol influx into HDL.

Synonyms: Lipid Transfer Protein II

Protein Families: Druggable Genome, Secreted Protein

Protein Pathways: PPAR signaling pathway

Product images:



AP08803PU-N staining PLTP in Heart tissue by Immunohistochemistry (Formalin-Fixed Paraffin-Embedded).