

Product datasheet for **AP08789PU-N**

Ogg1 Goat Polyclonal Antibody

Product data:

Product Type:	Primary Antibodies
Applications:	ELISA, IHC, WB
Recommended Dilution:	ELISA: 1/128000. Immunohistochemistry on Paraffin Sections: 2.5 µg/ml. Western Blot: 1/128000, 0.1 - 0.3 µg/ml.
Reactivity:	Human, Mouse, Rat
Host:	Goat
Isotype:	IgG
Clonality:	Polyclonal
Immunogen:	Synthetic peptide (C-HPKTSQAKGPSPLANK) from an Internal region of Mouse OGG1.
Specificity:	Recognizes 8-oxoguanine DNA Glycosylase Homolog 1 (OGG1).
Formulation:	Tris Saline Buffer, pH 7.3 containing 0.02% Sodium Azide as preservative and 0.5% BSA as stabilizer. State: Aff - Purified State: Liquid purified Ig fraction.
Concentration:	lot specific
Purification:	Immunoaffinity Chromatography.
Conjugation:	Unconjugated
Storage:	Store the antibody undiluted at 2-8°C for one month or (in aliquots) at -20°C for longer. Avoid repeated freezing and thawing.
Stability:	Shelf life: one year from despatch.
Gene Name:	8-oxoguanine DNA glycosylase
Database Link:	Entrez Gene 81528 Rat O70249



[View online »](#)

Background:

The Ogg1 gene encodes a DNA repair enzyme (N glycosylase/DNA lyase) that incises DNA at 8 oxoG residues. N glycosylase/DNA lyase excises 7,8 dihydro 8 oxoguanine and 2,6 diamino 4 hydroxy 5 N methylformamidopyrimidine (FAPY) from damaged DNA. N glycosylase/DNA lyase has a beta lyase activity that nicks DNA 3' to the lesion.

Alternative splicing of the C terminal region of the Ogg1 gene classifies splice variants into two major groups, type 1 and type 2, depending on the last exon of the sequence. Type 1 alternative splice variants end with exon 7 and type 2 end with exon 8. All variants share the N terminal region in common. Many alternative splice variants for this gene have been described, but the full length nature for every variant has not been determined. The N terminus of this gene contains a mitochondrial targeting signal, essential for mitochondrial localization.

Synonyms:

MMH, MUTM, OGH1, N-glycosylase/DNA lyase

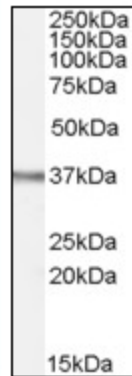
Product images:

Figure 2. Antibody (at 0.1 ug/ml) staining of Rat Spleen lysate (35 ug protein in RIPA buffer). Primary incubation was 1 hour. Detected by Chemiluminescence.

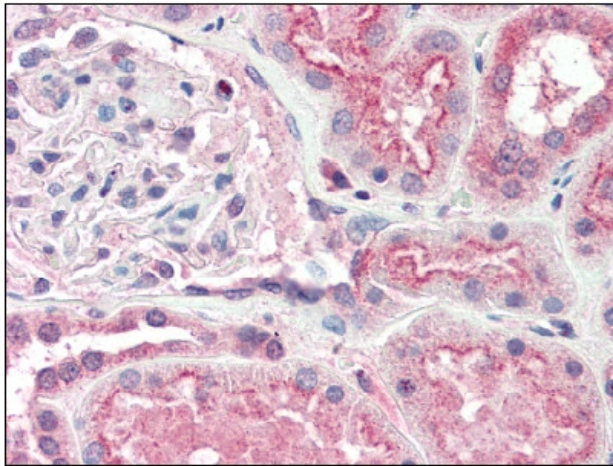


Figure 1. Immunohistochemical analysis of Formalin-Fixed Paraffin-Embedded Kidney tissue using at 2.5 ug/ml.