

## Product datasheet for **AP08782PU-N**

### SNAP25 (193-206) Goat Polyclonal Antibody

#### Product data:

Product Type:	Primary Antibodies
Applications:	ELISA, IHC, WB
Recommended Dilution:	<b>ELISA:</b> 1/32000. <b>Immunohistochemistry on Paraffin Sections:</b> 2.5 µg/ml. <b>Western Blot:</b> 0.01 - 0.03 µg/ml.
Reactivity:	Canine, Human, Mouse, Rat, Bovine, Bat, Chicken, Equine, Hamster, Monkey, Rabbit, Zebrafish
Host:	Goat
Isotype:	IgG
Clonality:	Polyclonal
Immunogen:	Synthetic peptide from the C-terminus of human SNAP25
Specificity:	Recognizes Synaptosomal Associated Protein 25 (SNAP25) at aa 193-206.
Formulation:	Tris Saline Buffer, pH 7.3 containing 0.02% Sodium Azide as preservative and 0.5% BSA as stabilizer State: Aff - Purified State: Liquid purified Ig fraction
Concentration:	lot specific
Purification:	Immunoaffinity Chromatography
Conjugation:	Unconjugated
Storage:	Store the antibody undiluted at 2-8°C for one month or (in aliquots) at -20°C for longer. Avoid repeated freezing and thawing.
Stability:	Shelf life: one year from despatch.
Gene Name:	synaptosome associated protein 25kDa
Database Link:	<a href="#">Entrez Gene 6616 Human P60880</a>



[View online »](#)

**Background:**

SNAP25 (Synaptosome-Associated Protein of 25 kDa) is a membrane bound, pre-synaptic nerve terminal protein that plays an essential role in synaptic vesicle fusion and exocytosis. It is part of the SNARE core complex containing SNAP25, VAMP2 and STX1A. SNAP25 is involved in the molecular regulation of neurotransmitter release. It is thought to play an important role in the synaptic function of specific neuronal systems and it associates with proteins involved in vesicle docking and membrane fusion. SNAP25 exists as two alternatively spliced isoforms, SNAP25A and SNAP25B. These isoforms are differentially expressed in neurons and neuroendocrine cells and they differ by 9 amino acids in the central portion of the protein.

**Synonyms:**

SNAP-25, SUP, SNAP, Super Protein, RIC4, ric-4

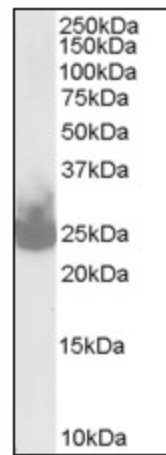
**Product images:**


Figure 2. Antibody ( at 0.03 ug/ml) staining of Mouse Brain lysate (35 ug protein in RIPA buffer). Primary incubation was 1 hour. Detected by Chemiluminescence.

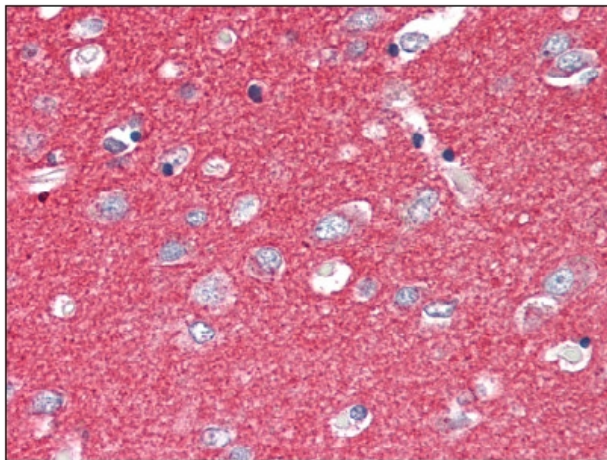


Figure 1. Immunohistochemical analysis of Formalin-Fixed Paraffin-Embedded Brain, cortex tissue using at 2.5 ug/ml.