

## Product datasheet for **AP08777PU-N**

### **ORAI3 Rabbit Polyclonal Antibody**

#### **Product data:**

Product Type:	Primary Antibodies
Applications:	IHC, WB
Recommended Dilution:	<b>Immunohistochemistry on Paraffin Sections:</b> 5 µg/ml. <b>Western Blot.</b>
Reactivity:	Human, Mouse, Rat
Host:	Rabbit
Isotype:	IgG
Clonality:	Polyclonal
Immunogen:	ORAI3 antibody was raised against a 15 amino acid peptide from near the amino terminus of Human ORAI3
Specificity:	Recognizes ORAI3, also known as Transmembrane Protein 142C, a 31.5 kD multi-pass membrane protein belonging to the ORAI family. This antibody is not expected to cross react with either ORAI1 or ORAI2. Cellular Localization: Cell Membrane.
Formulation:	PBS containing 0.02% Sodium Azide as preservative. State: Aff - Purified State: Liquid purified Ig fraction.
Concentration:	lot specific
Purification:	Affinity Chromatography.
Conjugation:	Unconjugated
Storage:	Store the antibody undiluted at 2-8°C for one month or (in aliquots) at -20°C for longer. Avoid repeated freezing and thawing.
Stability:	Shelf life: one year from despatch.
Gene Name:	ORAI calcium release-activated calcium modulator 3
Database Link:	<a href="#">Entrez Gene 93129 Human Q9BRQ5</a>



[View online »](#)

**Background:**

Antigen stimulation of immune cells triggers Ca<sup>2+</sup> entry through Ca<sup>2+</sup> release-activated Ca<sup>2+</sup> (CRAC) channels. CRAC channels are the main pathway for Ca<sup>2+</sup> influx in T-cells and promote the immune response to pathogens by activating the transcription factor NFAT. ORAI3 is one of two mammalian homologs of ORAI1, a four- transmembrane spanning protein that is an essential component of CRAC channels. ORAI3, along with ORAI1 and ORAI2, functions as a Ca<sup>2+</sup> plasma membrane channel that is gated through interactions with STIM1, the store-activated endoplasmic reticulum Ca<sup>2+</sup> sensor. Studies indicate that ORAI3 channels undergo a lesser degree of depotentiation than ORAI1 or ORAI2.

**Synonyms:**

TMEM142C, ORAI-3

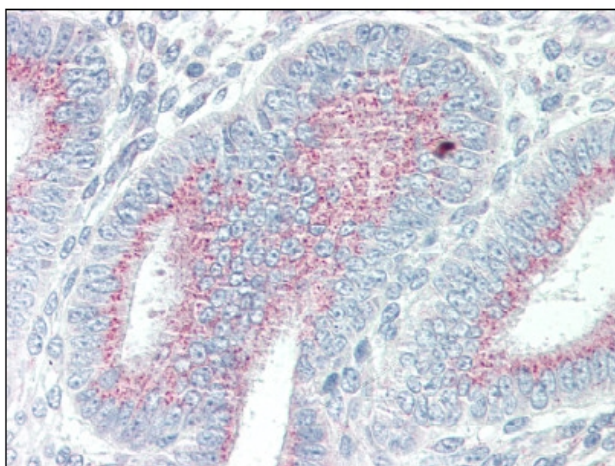
**Note:****Predicted Molecular Weight:** 31 kDa**Product images:**

Figure 1. Immunohistochemical analysis of Formalin-Fixed Paraffin-Embedded Human Uterus tissue using anti-ORA13 antibody ( at 5ug/ml).