

## Product datasheet for **AP08772PU-N**

### NOTCH3 (C-term) Goat Polyclonal Antibody

#### Product data:

Product Type:	Primary Antibodies
Applications:	ELISA, IHC
Recommended Dilution:	<b>ELISA:</b> 1/16000. <b>Immunohistochemistry on Paraffin Sections:</b> 5 µg/ml.
Reactivity:	Human, Mouse, Rat, Bat, Monkey
Host:	Goat
Isotype:	IgG
Clonality:	Polyclonal
Immunogen:	Synthetic peptide from C-terminus of Human NOTCH3
Specificity:	Recognizes Notch Homolog 3 (NOTCH3) at aa 2306-2318.
Formulation:	Tris Saline Buffer, pH 7.3 containing 0.02% Sodium Azide as preservative and 0.5% BSA as stabilizer State: Aff - Purified State: Liquid purified Ig fraction
Concentration:	lot specific
Purification:	Immunoaffinity Chromatography
Conjugation:	Unconjugated
Storage:	Store the antibody undiluted at 2-8°C for one month or (in aliquots) at -20°C for longer. Avoid repeated freezing and thawing.
Stability:	Shelf life: one year from despatch.
Gene Name:	notch 3
Database Link:	<a href="#">Entrez Gene 4854 Human Q9UM47</a>



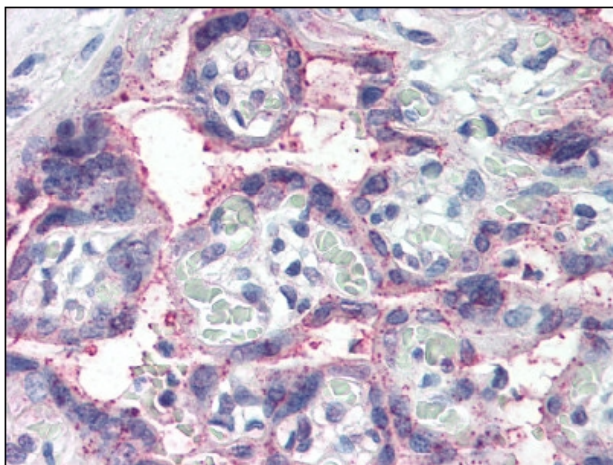
[View online »](#)

**Background:**

NOTCH3 functions as a receptor for membrane-bound ligands Jagged1, Jagged2 and Delta1 to regulate cell-fate determination. Upon ligand activation through the released notch intracellular domain (NICD) it forms a transcriptional activator complex with RBP-J kappa and activates genes of the enhancer of split locus. It affects the implementation of differentiation, proliferation and apoptotic programs. Defects in NOTCH3 are associated with cerebral autosomal dominant arteriopathy with subcortical infarcts and leukoencephalopathy (CADASIL).

**Synonyms:**

Notch-3

**Product images:**

at 5 ug/ml staining of NOTCH3 in Human Placenta tissue by Immunohistochemistry (FFPE)