

Product datasheet for **AP08770PU-N**

SLC12A4 (997-1007) Goat Polyclonal Antibody

Product data:

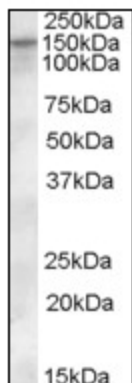
Product Type:	Primary Antibodies
Applications:	ELISA, IHC, WB
Recommended Dilution:	ELISA: 1/4000. Immunohistochemistry on Paraffin Sections: 5 µg/ml. Western Blot: 0.3 - 1 µg/ml.
Reactivity:	Canine, Human, Mouse, Rat, Bat, Hamster
Host:	Goat
Isotype:	IgG
Clonality:	Polyclonal
Immunogen:	Synthetic peptide from an Internal region of Human SLC12A4
Specificity:	Recognizes SLC12A4/KCC1 (Internal) at aa 997-1007.
Formulation:	Tris Saline Buffer, pH 7.3 containing 0.02% Sodium Azide as preservative and 0.5% BSA as stabilizer State: Aff - Purified State: Liquid purified Ig fraction
Concentration:	lot specific
Purification:	Immunoaffinity Chromatography
Conjugation:	Unconjugated
Storage:	Store the antibody undiluted at 2-8°C for one month or (in aliquots) at -20°C for longer. Avoid repeated freezing and thawing.
Stability:	Shelf life: one year from despatch.
Gene Name:	solute carrier family 12 member 4
Database Link:	Entrez Gene 6560 Human Q9UP95
Background:	Potassium-chloride cotransporters mediate the coupled movement of potassium and chloride ions across the plasma membrane. SLC12A4 mediates electroneutral potassium-chloride cotransport when activated by cell swelling and may contribute to cell volume homeostasis in single cells. SLC12A4 may play a role in early erythroid maturation events.



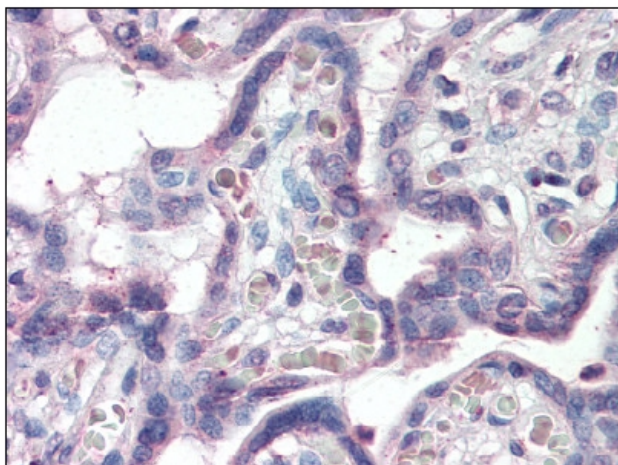
[View online »](#)

Synonyms: KCC1

Product images:



at 0.3 ug/ml staining of Human Heart lysate (35 ug protein in RIPA buffer). Primary incubation was 1 hour. Detected by Chemiluminescence



at 5 ug/ml staining of SLC12A4 in Human Placenta tissue by Immunohistochemistry (FFPE)