

Product datasheet for **AP08769PU-N**

GST3 (GSTP1) (22-33) Goat Polyclonal Antibody

Product data:

Product Type:	Primary Antibodies
Applications:	ELISA, IHC, WB
Recommended Dilution:	ELISA: 1/32000. Immunohistochemistry on Paraffin Sections: 5 µg/ml. Western Blot: 0.01 - 0.03 µg/ml.
Reactivity:	Canine, Human, Mouse, Rat, Bovine, Bat, Equine, Hamster, Monkey, Porcine
Host:	Goat
Isotype:	IgG
Clonality:	Polyclonal
Immunogen:	Synthetic peptide from an Internal region of Human GSTP1
Specificity:	Recognizes Glutathione S-transferase P (GSTP1) at aa 22-33.
Formulation:	Tris Saline Buffer, pH 7.3 containing 0.02% Sodium Azide as preservative and 0.5% BSA as stabilizer State: Aff - Purified State: Liquid purified Ig fraction
Concentration:	lot specific
Purification:	Immunoaffinity Chromatography
Conjugation:	Unconjugated
Storage:	Store the antibody undiluted at 2-8°C for one month or (in aliquots) at -20°C for longer. Avoid repeated freezing and thawing.
Stability:	Shelf life: one year from despatch.
Gene Name:	glutathione S-transferase pi 1
Database Link:	Entrez Gene 2950 Human P09211



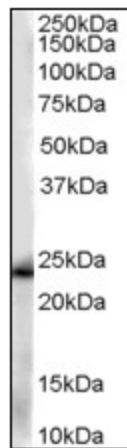
[View online »](#)

Background:

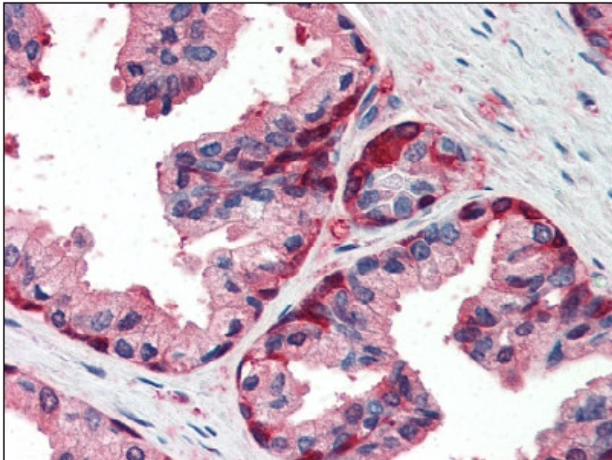
GST3 belongs to a family of important detoxifying enzymes. They catalyze the conjugation of glutathione with a wide variety of hydrophobic compounds bearing an electrophilic center, including chemical carcinogens and mutagens. They also bind non catalytically to certain hydrophobic compounds, such as bilirubin, in liver. GST3 isozyme is a dimeric protein consisting of 2 identical 27 kDa subunits. GST3 isozymes can be detected in many tissues including liver and also in erythrocytes. GST mammalian isoenzymes can be divided into into four classes named alpha, mu, pi and theta.

Synonyms:

Glutathione S-transferase P, GSTP1-1, GST pi, GST class-pi, FAES3

Product images:


at 0.01 ug/ml staining of human kidney lysate (35 ug protein in RIPA buffer). Primary incubation was 1 hour. Detected by Chemiluminescence.



at 5 ug/ml staining of GSTP1 in Human Prostate tissue by Immunohistochemistry (FFPE)