

## Product datasheet for **AP08767PU-N**

### **P4HB Rabbit Polyclonal Antibody**

#### **Product data:**

Product Type:	Primary Antibodies
Applications:	IF, IHC, WB
Recommended Dilution:	<b>Immunocytochemistry:</b> 1/50. <b>Immunofluorescence:</b> 1/50. <b>Immunohistochemistry on Paraffin Sections:</b> 1/50. <b>Western Blot:</b> 1/1000.
Reactivity:	Human, Monkey, Mouse, Rat
Host:	Rabbit
Isotype:	IgG
Clonality:	Polyclonal
Immunogen:	Synthetic peptide conjugated to KLH derived from the sequence around Proline 329 of Human P4HB.
Specificity:	Recognizes endogenous levels of total P4HB.
Formulation:	10mM Sodium HEPES, pH 7.5, 150mM Sodium Chloride, 0.1 mg/ml BSA, 50% Glycerol State: Aff - Purified State: Liquid purified IgG fraction
Purification:	Immunoaffinity Chromatography
Conjugation:	Unconjugated
Storage:	Store undiluted at 2-8°C for one month or (in aliquots) at -20°C for longer. Avoid repeated freezing and thawing.
Stability:	Shelf life: one year from despatch.
Gene Name:	prolyl 4-hydroxylase subunit beta
Database Link:	<a href="#">Entrez Gene 5034 Human P07237</a>



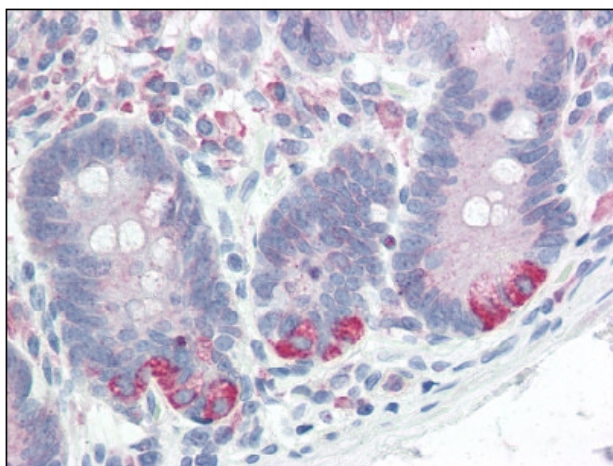
[View online »](#)

**Background:** P4HB, Prolyl 4 hydroxylase subunit beta, is a multifunctional and highly abundant enzyme that belongs to the protein disulfide isomerase family. When present as a tetramer consisting of two alpha and two beta subunits, this enzyme is involved in hydroxylation of prolyl residues in procollagen. This enzyme is also a disulfide isomerase containing two thioredoxin domains that catalyze the formation, breakage and rearrangement of disulfide bonds.

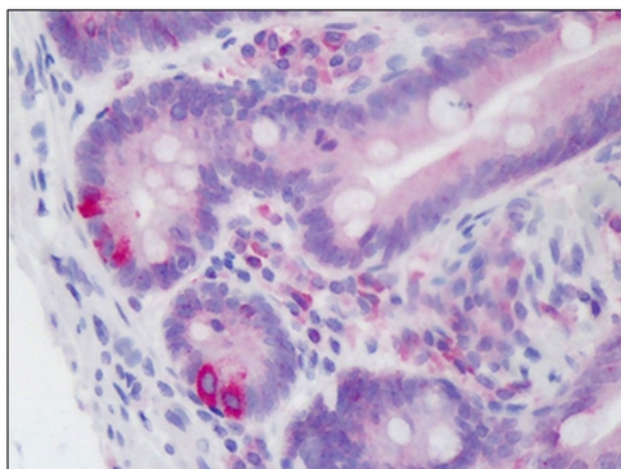
**Synonyms:** Protein disulfide-isomerase, Protein Disulfide Isomerase, PDIA1, PO4DB, p55, P4HB, ERBA2L, Prolyl 4-hydroxylase subunit beta, ER marker, PDI

**Note:** **Predicted Molecular Weight:** 57 kDa.

### Product images:



AP08767PU-N P4HB antibody staining of Formalin-Fixed, Paraffin-Embedded Human small intestine at 1/50 dilution.



AP08767PU-N P4HB antibody staining of Formalin-Fixed, Paraffin-Embedded Human small intestine.