

Product datasheet for **AP08722SU-N**

Pebp1 Rabbit Polyclonal Antibody

Product data:

Product Type:	Primary Antibodies
Applications:	WB
Recommended Dilution:	Western blot: 1/1000.
Reactivity:	Rat
Host:	Rabbit
Isotype:	IgG
Clonality:	Polyclonal
Immunogen:	Native PEBP protein purified from rat.
Specificity:	This antibody recognizes the ~22k PEBP protein in Western blots.
Formulation:	State: Serum State: Neat Serum.
Conjugation:	Unconjugated
Storage:	Store the antibody undiluted (in aliquots) at -20°C. Avoid repeated freezing and thawing.
Stability:	Shelf life: one year from despatch.
Gene Name:	phosphatidylethanolamine binding protein 1
Database Link:	Entrez Gene 29542 Rat P31044
Background:	Phosphatidylethanolamine binding protein (PEBP), also known as Raf kinase inhibitory protein (RKIP) is a highly conserved multifunctional protein that modulates the Raf/MAPK signaling cascade and has been implicated as a suppressor of metastatic cancer (Trakul N et al., 2005). PEBP has been shown to not only inhibit cell proliferation but also to induce differentiation of human keratinocytes (Yamazaki et al., 2004). Dysregulation of calpain activity results in cellular degeneration in conditions such as Alzheimer's disease and recently PEBP has been identified as a potential in vivo calpain substrate (Chen et al., 2006)
Synonyms:	PEBP-1, PEBP, Prostatic-binding protein, PBP, Raf kinase inhibitor protein, HCNPPp



[View online »](#)

Product images:

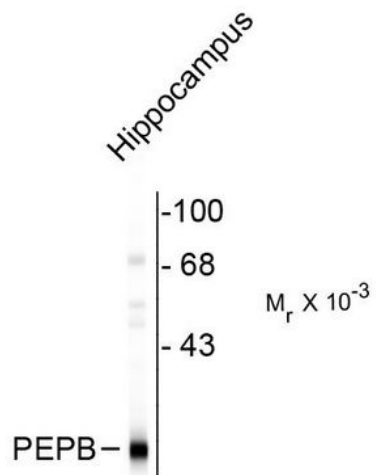


Figure 1. Western blot of rat brain lysate showing the specific immunolabeling of the ~22k PEBP protein.