

## Product datasheet for **AP08714PU-N**

### NSF (C-term) Rabbit Polyclonal Antibody

#### Product data:

Product Type:	Primary Antibodies
Applications:	WB
Recommended Dilution:	<b>Western blot:</b> 1/1000.
Reactivity:	Human, Mouse, Rat
Host:	Rabbit
Isotype:	IgG
Clonality:	Polyclonal
Immunogen:	Peptide corresponding to amino acid residues from the C-terminal region of rat NSF, conjugated to keyhole limpet hemocyanin (KLH).
Specificity:	This antibody recognizes the ~75k NSF protein.
Formulation:	10 mM HEPES (pH 7.5), 150 mM NaCl, 100 µg/ml BSA and 50% Glycerol. State: Aff - Purified State: Liquid purified Ig fraction.
Purification:	Affinity Chromatography.
Conjugation:	Unconjugated
Storage:	Store the antibody undiluted (in aliquots) at -20°C. Avoid repeated freezing and thawing.
Stability:	Shelf life: one year from despatch.
Gene Name:	N-ethylmaleimide sensitive factor
Database Link:	<a href="#">Entrez Gene 4905 Human P46459</a>
Background:	NSF (N-ethylmaleimide sensitive fusion protein) is a critical component of the SNARE (soluble NSF attachment protein receptors) protein complex that is involved in synaptic vesicle trafficking. Specifically, NSF has been found to be essential in membrane fusion. Furthermore, NSF has been recently demonstrated to bind other protein complexes such as AMPA receptor subunits (GluR2), GATE-16, LMA-1 and Rabs suggesting a more diverse role in the assembly of various protein complexes (Whiteheart et al., 2004).
Synonyms:	SKD2



[View online »](#)

## Product images:

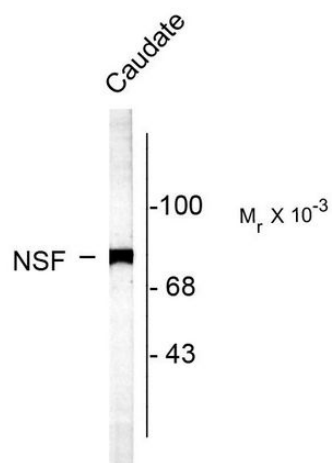


Figure 1. Western blot of rat caudate lysate showing specific labeling of the ~75k NSF protein.