

## Product datasheet for **AP08647SU-N**

### Fractin (C-term) Rabbit Polyclonal Antibody

#### Product data:

Product Type:	Primary Antibodies
Applications:	IHC, WB
Recommended Dilution:	<b>Western Blot:</b> 1/1000. <b>Immunohistochemistry:</b> 1/100.
Reactivity:	Human, Rat
Host:	Rabbit
Isotype:	IgG
Clonality:	Polyclonal
Immunogen:	Synthetic peptide taken from the C terminus of the 32-kDa Actin fragment.
Specificity:	Specific for the ~ 32 kDa Fractin protein in Western blots with no reactivity to intact actin. There is often a ladder of smaller bands in cells or culture or <i>in vivo</i> preparations due to further degradation by other proteases. The antibody has been shown to detect the processes and cell bodies of degenerating neurons and plaque-associated microglia in Alzheimer's disease. (Ref.1)
Formulation:	State: Serum State: Liquid Neat Serum without preservatives.
Conjugation:	Unconjugated
Storage:	Store the antibody undiluted (in aliquots) at -20°C. Avoid repeated freezing and thawing.
Stability:	Shelf life: one year from despatch.
Background:	Fractin (fragment of Actin) is a Caspase-specific cleavage product of actin and serves as a novel marker of apoptosis-related events. It has recently been reported that Fractin may have a functional role in apoptotic signaling in oligodendrocytes (Schulz, R., et al., Glia, 2009, in press).
Synonyms:	Fragment of Actin



[View online »](#)

Product images:

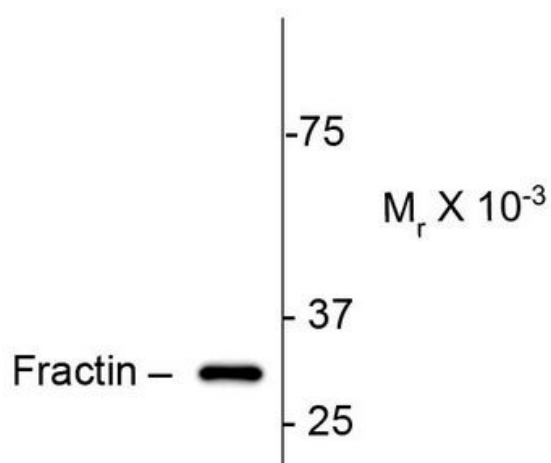


Figure 1. Western blot of colchicine treated Sy5y cell lysate showing specific Immunolabeling of the ~32k cleaved Actin fragment (Fractin).