

Product datasheet for **AP08587PU-N**

CCKBR (251-266) Goat Polyclonal Antibody

Product data:

Product Type:	Primary Antibodies
Applications:	ELISA, IHC, WB
Recommended Dilution:	ELISA: 1/32000. Immunohistochemistry on Paraffin Sections: 5 µg/ml. Western Blot: 0.1 - 0.3 µg/ml.
Reactivity:	Human, Bovine, Mouse
Host:	Goat
Isotype:	IgG
Clonality:	Polyclonal
Immunogen:	Synthetic peptide from an internal region of Human CCKBR
Specificity:	Recognizes Human Cholecystokinin B Receptor (CCKBR) at 251-266.
Formulation:	Tris Saline buffer, pH 7.3 containing 0.5% BSA as stabilizer and 0.02% Sodium Azide as preservative State: Aff - Purified State: Liquid purified Ig fraction
Concentration:	lot specific
Purification:	Immunoaffinity Chromatography
Conjugation:	Unconjugated
Storage:	Store the antibody undiluted (in aliquots) at -20°C. Avoid repeated freezing and thawing.
Stability:	Shelf life: one year from despatch.
Gene Name:	cholecystokinin B receptor
Database Link:	Entrez Gene 887 Human P32239



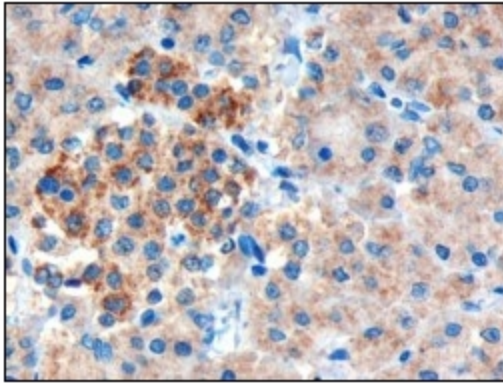
[View online »](#)

Background:

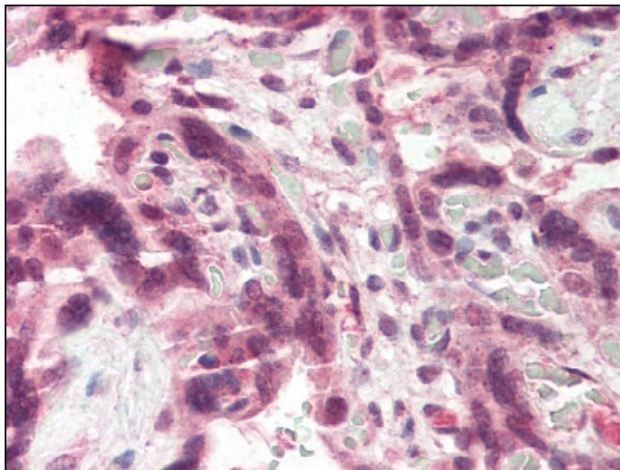
CCKBR is a G protein coupled receptor for gastrin and cholecystokinin (CCK), regulatory peptides of the brain and gastrointestinal tract. This protein is a type B gastrin receptor, which has a high affinity for both sulfated and nonsulfated CCK analogs and is found principally in the central nervous system and the gastrointestinal tract. A misspliced transcript variant including an intron has been observed in cells from colorectal and pancreatic tumors. CCKBR is most abundant in brain and stomach but it can also be found in colon, pancreas, thyroid, and various cancers.

Synonyms:

CCKB Receptor, Cholecystokinin type B receptor, CCK-BR, CCKBR, CCKRB, Cholecystokinin-2 receptor, CCK2-R

Product images:

Antibody staining (at 3 ug/ml) of Paraffin-Embedded Human Pancreas. Microwaved antigen retrieval with Tris/EDTA buffer pH 9, HRP-staining.



Antibody staining (at 5 ug/ml) of Formalin-Fixed Paraffin-Embedded Human Placenta.