

Product datasheet for **AP08576PU-N**

ARSB (359-372) Goat Polyclonal Antibody

Product data:

Product Type:	Primary Antibodies
Applications:	ELISA, IHC, WB
Recommended Dilution:	ELISA: 1/64000. Immunohistochemistry on Paraffin Sections: 5 µg/ml. Western Blot: 0.03 - 0.1 µg/ml.
Reactivity:	Human, Monkey
Host:	Goat
Isotype:	IgG
Clonality:	Polyclonal
Immunogen:	Synthetic peptide from an internal region of human ARSB
Specificity:	Recognizes Arylsulfatase B (ARSB) at aa 359-372.
Formulation:	Tris saline buffer, pH 7.3 containing 0.5% BSA as stabilizer and 0.02% Sodium Azide as preservative State: Aff - Purified State: Liquid purified Ig fraction
Concentration:	lot specific
Purification:	Immunoaffinity Chromatography
Conjugation:	Unconjugated
Storage:	Store the antibody undiluted at 2-8°C for one month or (in aliquots) at -20°C for longer. Avoid repeated freezing and thawing.
Stability:	Shelf life: one year from despatch.
Gene Name:	arylsulfatase B
Database Link:	Entrez Gene 411 Human P15848



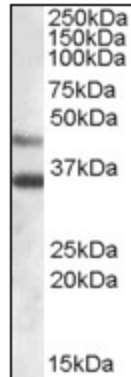
[View online »](#)

Background:

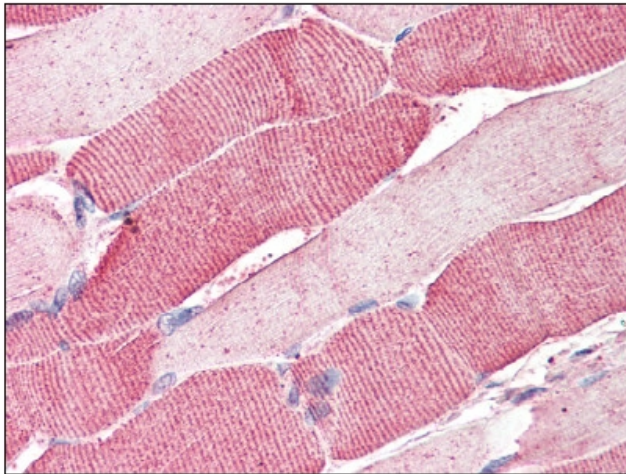
Arylsulfatase B encoded by this gene belongs to the sulfatase family. The arylsulfatase B homodimer hydrolyzes sulfate groups of N-Acetyl-D-galactosamine, chondroitin sulfate, and dermatan sulfate. The protein is targeted to the lysosome. Mucopolysaccharidosis type VI is an autosomal recessive lysosomal storage disorder resulting from a deficiency of arylsulfatase B. Two alternatively spliced transcript variants encoding distinct isoforms have been found for this gene.

Synonyms:

ASB, ARSB, G4S

Product images:

Arylsulfatase B (ARSB) antibody (at 0.03 ug/ml) staining of Human Heart lysate (35 ug protein in RIPA buffer). Primary incubation was 1 hour. Detected by Chemiluminescence.



at 5 ug/ml, staining ARSB in skeletal muscle tissue by Immunohistochemistry (Formalin-Fixed Paraffin-Embedded).