

Product datasheet for **AP08565PU-N**

KPNA3 (509-521) Goat Polyclonal Antibody

Product data:

Product Type:	Primary Antibodies
Applications:	ELISA, IHC, WB
Recommended Dilution:	ELISA. Immunohistochemistry on Paraffin Sections: 5 µg/ml. Western Blot: 0.1 - 0.5 µg/ml.
Reactivity:	Human, Mouse, Bovine, Bat, Canine, Chicken, Equine, Hamster, Monkey, Porcine, Rabbit, Rat
Host:	Goat
Isotype:	IgG
Clonality:	Polyclonal
Immunogen:	Synthetic peptide from the C-terminus of Human KPNA3.
Specificity:	Recognizes Karyopherin Alpha 3 (KPNA3) at aa 509-521.
Formulation:	Tris saline buffer, pH 7.3 containing 0.5% BSA as stabilizer and 0.02% Sodium Azide as preservative State: Aff - Purified State: Liquid purified Ig fraction
Concentration:	lot specific
Purification:	Immunoaffinity Chromatography
Conjugation:	Unconjugated
Storage:	Store the antibody undiluted at 2-8°C for one month or (in aliquots) at -20°C for longer. Avoid repeated freezing and thawing.
Stability:	Shelf life: one year from despatch.
Gene Name:	karyopherin subunit alpha 3
Database Link:	Entrez Gene 3839 Human O00505



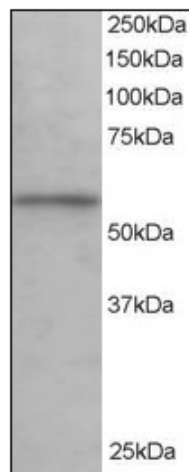
[View online »](#)

Background:

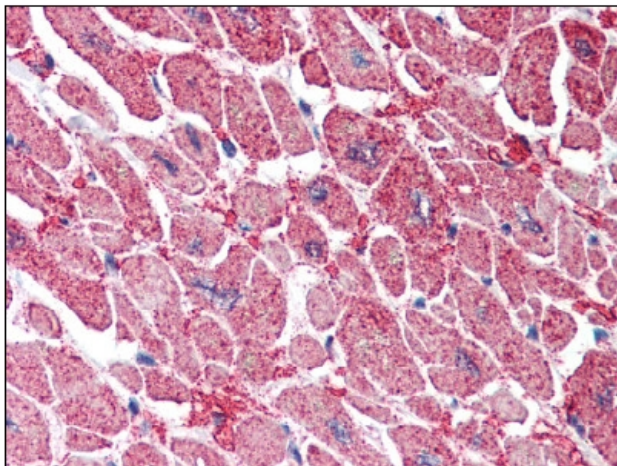
The transport of molecules between the nucleus and the cytoplasm in eukaryotic cells is mediated by the nuclear pore complex (NPC) which consists of 60-100 proteins and is probably 120 million daltons in molecular size. Small molecules (up to 70 kD) can pass through the nuclear pore by nonselective diffusion; larger molecules are transported by an active process. Most nuclear proteins contain short basic amino acid sequences known as nuclear localization signals (NLSs). KPNA3, encodes a protein similar to certain nuclear transport proteins of *Xenopus* and human. The predicted amino acid sequence shows similarity to *Xenopus* importin, yeast SRP1, and human RCH1 (KPNA2), respectively. The similarities among these proteins suggests that karyopherin alpha-3 may be involved in the nuclear transport system.

Synonyms:

Karyopherin subunit alpha-3, SRP1-gamma, Importin alpha Q2, QIP2

Product images:

Antibody staining (0.1 ug/ml) of Human Testis lysate (RIPA buffer, 35 ug total protein per lane). Primary incubated for 1 hour. Detected by western blot using Chemiluminescence.



Heart: Formalin-Fixed Paraffin-Embedded (FFPE)