

## Product datasheet for **AP08522PU-N**

### GFAP (417-430) Goat Polyclonal Antibody

#### Product data:

Product Type:	Primary Antibodies
Applications:	ELISA, IHC, WB
Recommended Dilution:	<b>ELISA:</b> 1/32000. <b>Immunohistochemistry on Paraffin Sections:</b> 5 µg/ml. <b>Western Blot:</b> 1 - 3 µg/ml.
Reactivity:	Human, Rat, Canine, Mouse, Bovine, Bat, Equine, Monkey, Rabbit
Host:	Goat
Isotype:	IgG
Clonality:	Polyclonal
Immunogen:	Synthetic peptide from the C-terminus of Human GFAP
Specificity:	This antibody recognizes Glial Fibrillary Acidic Protein (GFAP) at aa 417-430.
Formulation:	Tris-buffered saline, pH 7.3, 0.5% BSA, 0.02% sodium azide State: Aff - Purified State: Liquid purified Ig fraction
Concentration:	lot specific
Purification:	Immunoaffinity Chromatography
Conjugation:	Unconjugated
Storage:	Store undiluted at 2-8°C for one month or (in aliquots) at -20°C for longer. Avoid repeated freezing and thawing.
Stability:	Shelf life: one year from despatch.
Gene Name:	glial fibrillary acidic protein
Database Link:	<a href="#">Entrez Gene 2670 Human P14136</a>



[View online »](#)

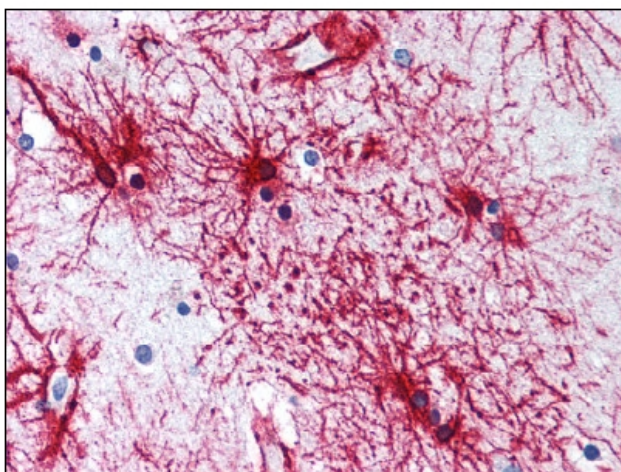
**Background:**

Glial fibrillary acidic protein (GFAP) is a member of the class III intermediate filament protein family. It is heavily, and specifically, expressed in astrocytes and certain other astroglia in the central nervous system, in satellite cells in peripheral ganglia, and in non myelinating Schwann cells in peripheral nerves. In addition, neural stem cells frequently strongly express GFAP. Antibodies to GFAP are therefore very useful as markers of astrocytic cells. In addition many types of brain tumor, presumably derived from astrocytic cells, heavily express GFAP. GFAP is also found in the lens epithelium, Kupffer cells of the liver, in some cells in salivary tumors and has been reported in erythrocytes.

In the central nervous system, this antibody stains astrocytes and some groups of ependymal cells. However, in the peripheral nervous system, it stains Schwann cells, satellite cells and enteric glial cells.

**Synonyms:**

Glial Fibrillary Acidic Protein

**Product images:**

GFAP Antibody staining of Formalin-Fixed Paraffin-Embedded Human Brain, Cortex, Astrocytes at 5 ug/ml after heat-induced antigen retrieval.