

Product datasheet for **AP08511PU-N**

Col18a1 (C-term) Rabbit Polyclonal Antibody

Product data:

Product Type:	Primary Antibodies
Applications:	ELISA, IHC, WB
Recommended Dilution:	ELISA: 1 µg/ml. Immunohistochemistry on Paraffin Sections: 10 µg/ml. Western Blot: 1 µg/ml.
Reactivity:	Human, Mouse
Host:	Rabbit
Isotype:	IgG
Clonality:	Polyclonal
Immunogen:	Synthetic peptide corresponding to C-terminal residues of Mouse Col18a1 (Collagen alpha1(XVIII) chain precursor, contains: Endostatin)
Specificity:	This antibody recognizes Collagen XVIII Alpha 1 (COL18A1) at C-term.
Formulation:	PBS containing 0.01% Sodium Azide as preservative and 50% Glycerol as stabilizer State: Aff - Purified State: Liquid purified Ig fraction
Concentration:	lot specific
Purification:	Immunoaffinity Chromatography
Conjugation:	Unconjugated
Storage:	Store the antibody undiluted at 2-8°C for one month or (in aliquots) at -20°C for longer. Avoid repeated freezing and thawing.
Stability:	Shelf life: one year from despatch.
Gene Name:	collagen, type XVIII, alpha 1
Database Link:	Entrez Gene 12822 Mouse P39061



[View online »](#)

Background:

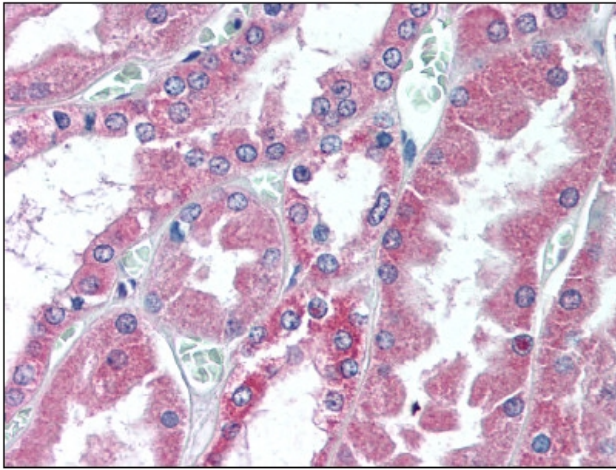
COLA18A probably plays a major role in determining the retinal structure as well as in the closure of the neural tube.

Endostatin potently inhibits endothelial cell proliferation and angiogenesis. May inhibit angiogenesis by binding to the heparan sulfate proteoglycans involved in growth factor signaling.

Defects in COL18A1 are a cause of Knobloch syndrome (KNO). KNO is an autosomal recessive disorder defined by the occurrence of high myopia, vitreoretinal degeneration with retinal detachment, macular abnormalities and occipital encephalocele.

Synonyms:

COL18A1, Endostatin, KNO1

Product images:

Kidney: Formalin-Fixed Paraffin-Embedded (FFPE)