

Product datasheet for **AP08509PU-N**

Apolipoprotein D (APOD) (N-term) Rabbit Polyclonal Antibody

Product data:

Product Type:	Primary Antibodies
Applications:	IHC, WB
Recommended Dilution:	Immunohistochemistry on Paraffin Sections: 10 µg/ml. Western Blot: 1 µg/ml.
Reactivity:	Human, Mouse, Rat
Host:	Rabbit
Isotype:	IgG
Clonality:	Polyclonal
Immunogen:	Synthetic peptide corresponding to N-terminal residues of mouse APOD (Apolipoprotein D precursor).
Specificity:	This antibody recognizes Apolipoprotein D (APOD).
Formulation:	PBS containing 0.01% Sodium Azide as preservative and 50% Glycerol as stabilizer. State: Aff - Purified State: Liquid purified Ig fraction.
Concentration:	lot specific
Purification:	Immunoaffinity Chromatography.
Conjugation:	Unconjugated
Storage:	Store the antibody undiluted at 2-8°C for one month or (in aliquots) at -20°C for longer. Avoid repeated freezing and thawing.
Stability:	Shelf life: one year from despatch.
Gene Name:	apolipoprotein D
Database Link:	Entrez Gene 347 Human P05090



[View online »](#)

Background:

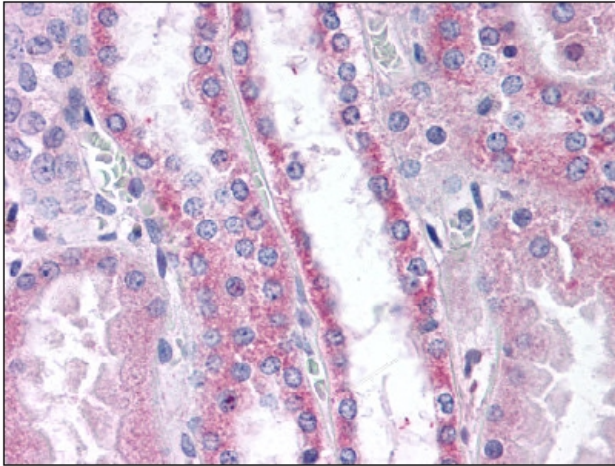
Apolipoprotein D (APO D), a glycoprotein involved in the human plasma lipid transport system. It is a progesterone binding glycoprotein of 24,000 dalton monomer molecular size, is a constituent of high density lipoprotein in plasma. The function of apolipoprotein D in the metabolism of plasma lipoproteins is unclear but the observation that this protein forms complexes with lecithin: cholesterol acyltransferase has led to the suggestion that apolipoprotein D may be involved in cholesterol esterification and transport of substrates and products of the reaction. Apolipoprotein D is expressed in a range of normal tissues including axillary apocrine glands, adrenal cortex and corpus luteum. Peripheral nerves, pituitary, testis, cerebellum and renal tubes are also positive. APO D was first isolated in large quantity as GCDFP 24, the major protein component of most human breast cyst fluids. In recent studies, Apo D immunoreactivity has been shown to be an early indicator of prostate cancer and advanced primary prostate tumors.

Synonyms:

APOD, Apo-D

Note:

Predicted Molecular Weight: 21 kDa.

Product images:

Human Kidney: Formalin-Fixed Paraffin-Embedded (FFPE)