

## Product datasheet for **AP08463PU-N**

### SnoN (SKIL) (Isoform SNON, 600-684) Rabbit Polyclonal Antibody

#### Product data:

Product Type:	Primary Antibodies
Applications:	IHC, WB
Recommended Dilution:	<b>Immunohistochemistry on Paraffin Sections:</b> 5 µg/ml. <b>Western Blot:</b> 1 - 3 µg/ml.
Reactivity:	Human, Mouse, Rat
Host:	Rabbit
Isotype:	IgG
Clonality:	Polyclonal
Immunogen:	Synthetic peptide corresponding to a portion of the amino acids 600-684 of human SnoN.
Specificity:	This antibody recognizes SnoN.
Formulation:	PBS containing 0.2% Gelatin as stabilizer and 0.05% Sodium Azide as preservative. State: Aff - Purified State: Liquid purified Ig fraction.
Concentration:	lot specific
Purification:	Protein G Chromatography.
Conjugation:	Unconjugated
Storage:	Store the antibody undiluted at 2-8°C for one month or (in aliquots) at -20°C for longer. Avoid repeated freezing and thawing.
Stability:	Shelf life: one year from despatch.
Gene Name:	SKI-like proto-oncogene
Database Link:	<a href="#">Entrez Gene 6498 Human P12757</a>



[View online »](#)

**Background:**

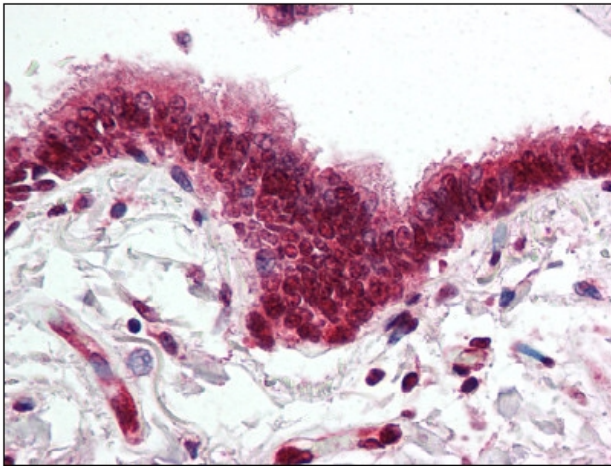
SnoN, an 80 kDa protein, is a member of ski family of nuclear proto-oncogenes involved in regulation of cellular transformation and differentiation. Primarily expressed in two isoforms, SnoN is localized in cytoplasm in normal tissues and non-tumorigenic primary epithelial cells. In cancer tissues or cells, SnoN is exclusively localized in the nucleus. It plays a vital role in inhibition of cell cycle arrest induced by TGF-. Upon morphological differentiation or cell-cycle arrest, SnoN translocates into the nucleus, binds to Smad2, Smad3, and Smad4 on TGF- responsive promoters and represses their ability to activate expression of TGF- target genes. It has also been found to mediate transcriptional repression of thyroid hormone receptor, Mad and pRb. Increased expression of SnoN has been detected in many human tumor cell lines suggesting a clinical significance.

**Synonyms:**

Ski-like protein, Ski-related protein, Ski-related novel protein N, Ski-related oncogene, SNO, SnoA, Snol

**Note:**

**Predicted Molecular Weight:** 77 kDa.

**Product images:**

Lung, respiratory epithelium: Formalin-Fixed Paraffin-Embedded (FFPE)