

Product datasheet for **AP08450PU-N**

HTRA3 (250-300) Rabbit Polyclonal Antibody

Product data:

Product Type:	Primary Antibodies
Applications:	IHC, WB
Recommended Dilution:	Immunohistochemistry on Paraffin Sections: 10 µg/ml. Western Blot: 1 - 3 µg/ml.
Reactivity:	Human, Rat, Mouse, Monkey
Host:	Rabbit
Isotype:	IgG
Clonality:	Polyclonal
Immunogen:	HTRA3 antibody was raised against amino acids 273-287 (IVSTAQREGRELGLR) of Human HtrA3 were used as immunogen. Percent identity by BLAST analysis: Human, Gibbon, Monkey, Marmoset (100%); Gorilla, Bovine, Pig, Pufferfish (93%); Mouse, Rat, Panda, Dog, Horse, Turkey, Chicken, Xenopus, Stickleback (87%); Hamster, Elephant, Opossum, Guinea pig, Platypus, Lizard, Salmon, Zebrafish (80%).
Specificity:	This antibody recognizes Serine Protease HTRA3 at aa250-300.
Formulation:	PBS containing 0.2% Gelatin as stabilizer and 0.05% Sodium Azide as preservative State: Purified State: Liquid purified Ig fraction
Concentration:	lot specific
Purification:	Protein G Chromatography
Conjugation:	Unconjugated
Storage:	Store undiluted at 2-8°C for one month or (in aliquots) at -20°C for longer. Avoid repeated freezing and thawing.
Stability:	Shelf life: one year from despatch.
Gene Name:	HtrA serine peptidase 3
Database Link:	Entrez Gene 94031 Human P83110



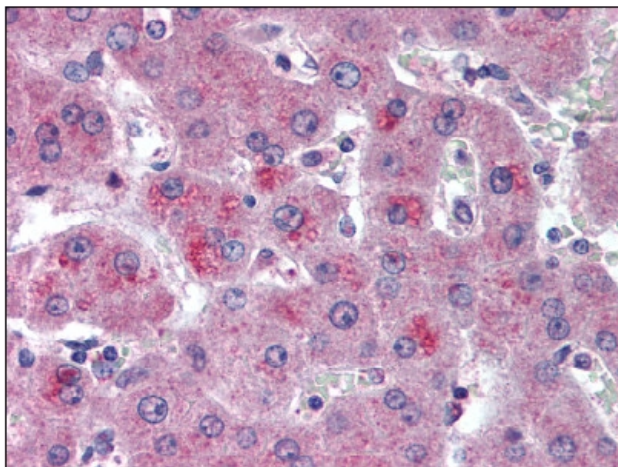
[View online »](#)

Background:

HTRA3 belongs to the human high-temperature requirement factor A (HtrA) family. It is also called pregnancy-related serine protease. HtrA3 has two isoforms (long and short), which is produced by alternative splicing. Similar to HTRA1, HTRA3 binds to various TGF-beta proteins and inhibited the signaling of BMP-4, -2 and TGF-beta 1. HtrA3 does not inhibit signaling originated from a constitutively active BMP receptor, indicating that the inhibition occurred upstream of the cell surface receptor.

Synonyms:

PRSP

Product images:

Liver: Formalin-Fixed Paraffin-Embedded (FFPE)