

Product datasheet for **AP08423PU-N**

ALAS1 (480-530) Rabbit Polyclonal Antibody

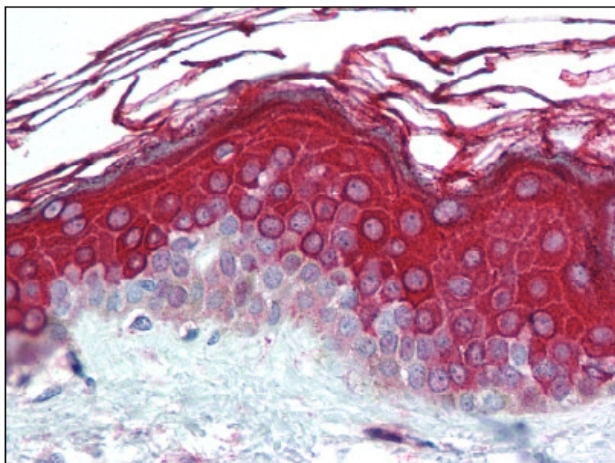
Product data:

Product Type:	Primary Antibodies
Applications:	IHC, WB
Recommended Dilution:	Immunohistochemistry on Paraffin Sections: 5 µg/ml. Western Blot: 1 - 3 µg/ml.
Reactivity:	Human
Host:	Rabbit
Isotype:	IgG
Clonality:	Polyclonal
Immunogen:	Synthetic peptide corresponding to a portion of amino acids 480-530 of human ALAS1.
Specificity:	This antibody recognizes ALAS1.
Formulation:	PBS containing 0.2% Gelatin as stabilizer and 0.05% Sodium Azide as preservative. State: Aff - Purified State: Liquid purified Ig fraction.
Concentration:	lot specific
Purification:	Protein G Chromatography.
Conjugation:	Unconjugated
Storage:	Store the antibody undiluted at 2-8°C for one month or (in aliquots) at -20°C for longer. Avoid repeated freezing and thawing.
Stability:	Shelf life: one year from despatch.
Gene Name:	5'-aminolevulinate synthase 1
Database Link:	Entrez Gene 211 Human P13196
Background:	Delta Aminolevulinate Synthase catalyzes the condensation of glycine with succinyl CoA to form delta aminolevulinic acid. This nuclear encoded mitochondrial enzyme is the first and rate limiting enzyme in the mammalian heme biosynthetic pathway.
Synonyms:	ALAS3, ALASH, Delta-ALA synthetase
Note:	Predicted Molecular Weight: 71 kDa.



[View online »](#)

Product images:



Skin: Formalin-Fixed Paraffin-Embedded (FFPE)