

Product datasheet for **AP08399PU-N**

TRF41 (PAPD7) (447-462) Rabbit Polyclonal Antibody

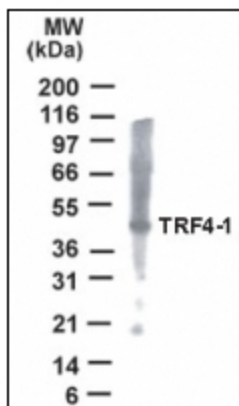
Product data:

Product Type:	Primary Antibodies
Applications:	IHC, WB
Recommended Dilution:	Immunohistochemistry on Paraffin Sections: 5 µg/ml. Western Blot: 1 - 2 µg/ml.
Reactivity:	Human, Monkey
Host:	Rabbit
Isotype:	IgG
Clonality:	Polyclonal
Immunogen:	Synthetic peptide containing amino acids 447-462 of human TRF4-1
Specificity:	This antibody recognizes Polymerase (DNA Directed) Sigma (POLS/TRF4-1) at aa 447-462.
Formulation:	PBS containing 0.2% Gelatin as stabilizer and 0.05% Sodium Azide as preservative State: Aff - Purified State: Liquid purified Ig fraction
Concentration:	lot specific
Purification:	Protein G Chromatography
Conjugation:	Unconjugated
Storage:	Store the antibody undiluted at 2-8°C for one month (in aliquots) at -20°C for longer. Avoid repeated freezing and thawing.
Stability:	Shelf life: one year from despatch.
Gene Name:	PAP associated domain containing 7
Database Link:	Entrez Gene 11044 Human Q5XG87
Background:	Catalytic subunit of a TRAMP-like complex which has a poly(A) RNA polymerase activity and is involved in a post-transcriptional quality control mechanism. Polyadenylation with short oligo(A) tails is required for the degradative activity of the exosome on several of its nuclear RNA substrates. Has no terminal uridylyltransferase activity, and does not play a role in replication-dependent histone mRNA degradation via uridylation.
Synonyms:	DNA polymerase sigma, DNA polymerase kappa, TRF-4, LAK-1, TUTase5

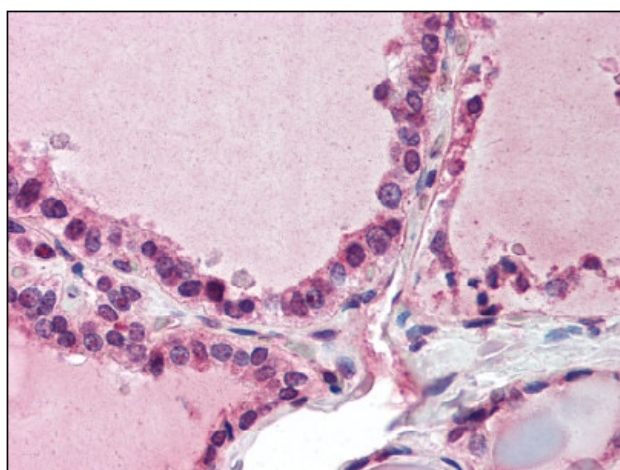


[View online »](#)

Product images:



Western Blot: Detection of TRF4-1 in HeLa cell lysate with anti-TRF4-1 antibody.



Thyroid: Formalin-Fixed Paraffin-Embedded (FFPE)