

## Product datasheet for **AP08321PU-N**

### SMOC2 (N-term) Rabbit Polyclonal Antibody

#### Product data:

Product Type:	Primary Antibodies
Applications:	ELISA, IHC, WB
Recommended Dilution:	<b>ELISA:</b> 1 µg/ml. <b>Immunohistochemistry on Paraffin Sections:</b> 20 µg/ml. <b>Western Blot:</b> 1 µg/ml.
Reactivity:	Human
Host:	Rabbit
Isotype:	IgG
Clonality:	Polyclonal
Immunogen:	Synthetic peptide corresponding to N-terminal residues of Human SMOC2.
Specificity:	This antibody recognizes SMOC2 (N-term).
Formulation:	PBS containing 0.01% Sodium Azide as preservative and 50% Glycerol as stabilizer. State: Aff - Purified State: Liquid purified Ig fraction.
Concentration:	lot specific
Purification:	Immunoaffinity Chromatography.
Conjugation:	Unconjugated
Storage:	Store the antibody undiluted at 2-8°C for one month or (in aliquots) at -20°C for longer. Avoid repeated freezing and thawing.
Stability:	Shelf life: one year from despatch.
Gene Name:	SPARC related modular calcium binding 2
Database Link:	<a href="#">Entrez Gene 64094 Human Q9H3U7</a>



[View online »](#)

**Background:**

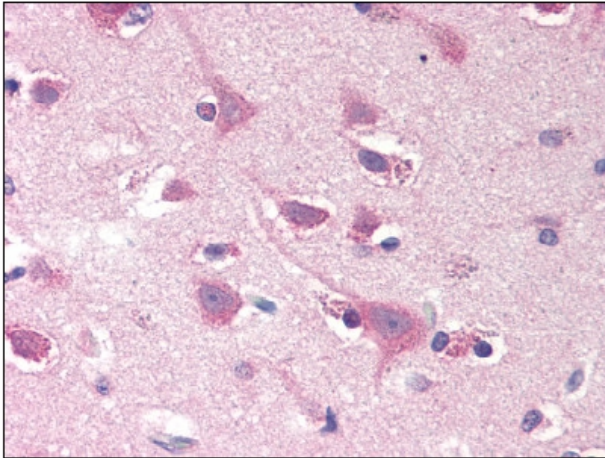
SMOC 2 (Secreted modular calcium binding protein 2) is a secreted modular protein containing an EF hand calcium binding domain homologous to that in BM40. It consists of two thyroglobulin like domains, a follistatin like domain and a novel domain found only in the homologous SMOC 1. SMOC 1 and 2 form a separate group within the BM40 family. SMOC 2 is a glycoprotein with a calcium dependent conformation. SMOC 2 contains 2 EF hand calcium binding domains, 1 Kazal like domain and 2 thyroglobulin type I domains.

**Synonyms:**

SMOC-2, SMAP2, SMAP-2

**Note:**

**Predicted Molecular Weight:** 50 kDa.

**Product images:**

Brain, cortex: Formalin-Fixed Paraffin Embedded (FFPE)