

## Product datasheet for **AP08318PU-N**

### SLC40A1 (N-term) Rabbit Polyclonal Antibody

#### Product data:

Product Type:	Primary Antibodies
Applications:	ELISA, IHC, WB
Recommended Dilution:	<b>ELISA:</b> 1 µg/ml. <b>Immunohistochemistry on Paraffin Sections:</b> 20 µg/ml. <b>Western Blot:</b> 1 µg/ml.
Reactivity:	Human, Mouse
Host:	Rabbit
Isotype:	IgG
Clonality:	Polyclonal
Immunogen:	Synthetic peptide - KLH conjugated corresponding to N-terminal residues of Human MTP1 (Metal Transporter Protein 1).
Specificity:	This antibody recognizes MTP1/SLC40A1 (N-term).
Formulation:	PBS containing 0.01% Sodium Azide as preservative and 50% Glycerol as stabilizer. State: Aff - Purified State: Liquid purified Ig fraction.
Concentration:	lot specific
Purification:	Immunoaffinity Chromatography.
Conjugation:	Unconjugated
Storage:	Store the antibody undiluted at 2-8°C for one month or (in aliquots) at -20°C for longer. Avoid repeated freezing and thawing.
Stability:	Shelf life: one year from despatch.
Gene Name:	solute carrier family 40 member 1
Database Link:	<a href="#">Entrez Gene 30061 Human Q9NP59</a>



[View online »](#)

**Background:** SLC40A1 may be involved in iron export from duodenal epithelial cells and also in transfer of iron between maternal and fetal circulation. It mediates iron efflux in the presence of a ferroxidase (hephaestin and/or ceruloplasmin). Defects in SLC40A1 are the cause of hemochromatosis type 4, an autosomal dominant iron-loading disorder characterized by early iron accumulation in reticuloendothelial cells and a marked increase in serum ferritin.

**Synonyms:** Slc40a1, Fpn1, Ireg1, Slc11a3, Slc39a1, Ferroportin-1, Iron-regulated transporter 1, Metal transporter protein 1

**Note:** **Predicted Molecular Weight:** 63 kDa

**Product images:**

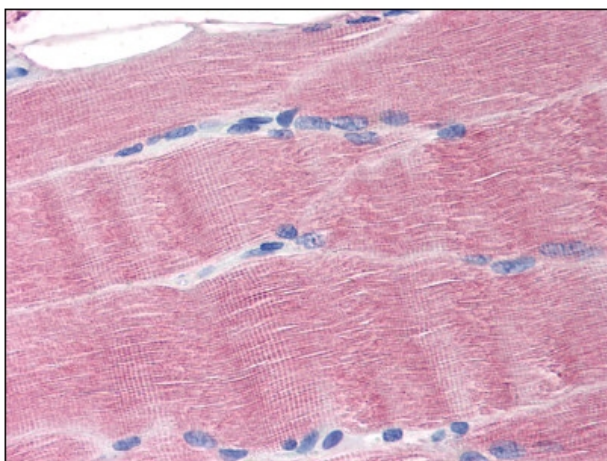


Figure 1. MTP1 antibody staining of Formalin-Fixed Paraffin Embedded Human Skeletal Muscle.