

Product datasheet for **AP08316PU-N**

SLC15A1 (C-term) Rabbit Polyclonal Antibody

Product data:

Product Type:	Primary Antibodies
Applications:	ELISA, IHC, WB
Recommended Dilution:	ELISA: 1 µg/ml. Immunohistochemistry on Paraffin Sections: 10 µg/ml. Western Blot: 1 µg/ml.
Reactivity:	Human
Host:	Rabbit
Isotype:	IgG
Clonality:	Polyclonal
Immunogen:	Synthetic peptide corresponding to C-terminal residues of Human SLC15A1.
Specificity:	This antibody recognizes SLC15A1 (C-term).
Formulation:	PBS State: Aff - Purified State: Liquid purified IgG fraction Stabilizer: 50% Glycerol Preservative: 0.01% Sodium Azide
Concentration:	lot specific
Purification:	Immunoaffinity Chromatography
Conjugation:	Unconjugated
Storage:	Store undiluted at 2-8°C for one month or (in aliquots) at -20°C for longer. Avoid repeated freezing and thawing.
Stability:	Shelf life: one year from despatch.
Gene Name:	solute carrier family 15 member 1
Database Link:	Entrez Gene 6564 Human P46059
Background:	SLC15A1 belongs to the PTR2/POT transporter (TC 2.A.17) family. It may constitute a major route for the absorption of protein digestion end-products. Its function : Proton-coupled intake of oligopeptides of 2 to 4 amino acids with a preference for dipeptides.

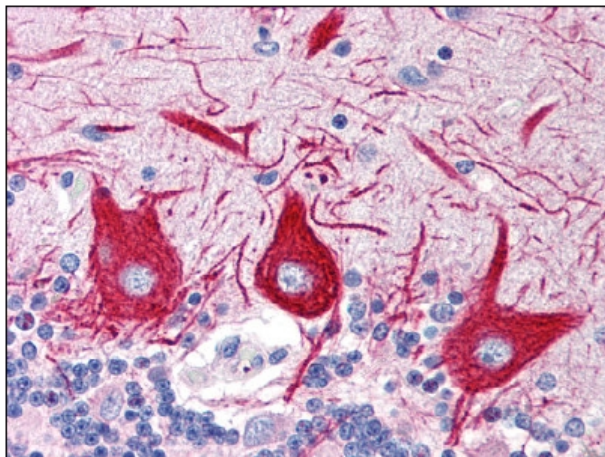


[View online »](#)

Synonyms: Peptide transporter 1

Note: **Predicted Molecular Weight:** 79 kDa.

Product images:



Formalin-Fixed, Paraffin-Embedded brain, cerebellum tissue stained with SLC15A1 Antibody at 10 ug/ml after heat-induced antigen retrieval.