

Product datasheet for **AP08315PU-N**

RAMP3 (N-term) Rabbit Polyclonal Antibody

Product data:

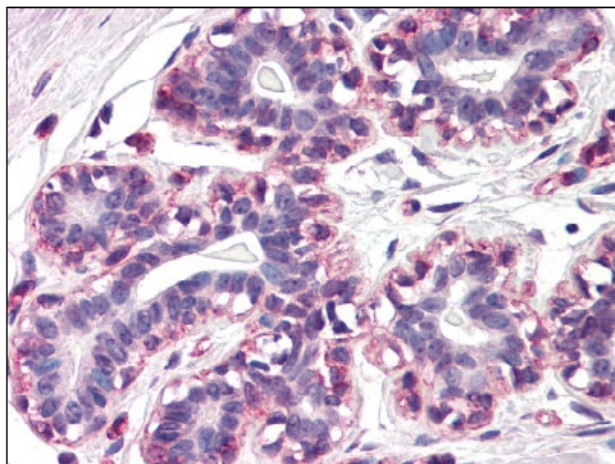
| | |
|-----------------------|--|
| Product Type: | Primary Antibodies |
| Applications: | ELISA, IHC, WB |
| Recommended Dilution: | ELISA: 1 µg/ml. Immunohistochemistry on Paraffin Sections: 20 µg/ml. Western Blot: 1 µg/ml. |
| Reactivity: | Human |
| Host: | Rabbit |
| Isotype: | IgG |
| Clonality: | Polyclonal |
| Immunogen: | Synthetic peptide corresponding to N-terminal residues of Human RAMP3. |
| Specificity: | This antibody recognizes RAMP3. |
| Formulation: | PBS containing 0.01% Sodium Azide as preservative and 50% Glycerol as stabilizer. State: Aff - Purified State: Liquid purified Ig fraction. |
| Concentration: | lot specific |
| Purification: | Immunoaffinity Chromatography. |
| Conjugation: | Unconjugated |
| Storage: | Store the antibody undiluted at 2-8°C for one month or (in aliquots) at -20°C for longer. Avoid repeated freezing and thawing. |
| Stability: | Shelf life: one year from despatch. |
| Gene Name: | receptor (G protein-coupled) activity modifying protein 3 |
| Database Link: | Entrez Gene 10268 Human O60896 |
| Background: | RAMP3 (receptor calcitonin activity modifying protein 3) transports the calcitonin gene-related peptide type 1 receptor (CALCRL) to the plasma membrane. It acts as a receptor for adrenomedullin (AM) together with CALCRL. It is strongly expressed in lung, breast, immune system and fetal tissues and belongs to the RAMP family. |
| Synonyms: | CRLR activity-modifying protein 3 |



[View online »](#)

Note: Predicted Molecular Weight: 16 kDa.

Product images:



Breast: Formalin-Fixed Paraffin Embedded (FFPE)