

## Product datasheet for **AP08314PU-N**

### **NOX1 (C-term) Rabbit Polyclonal Antibody**

#### **Product data:**

|                         |   |
|-------------------------|---|
| Product Type:           | Primary Antibodies  |
| Applications:           | ELISA, IHC, WB  |
| Recommended Dilution:   | <b>ELISA:</b> 1 µg/ml.<br><b>Immunohistochemistry on Paraffin Sections:</b> 10 µg/ml.<br><b>Western Blot:</b> 1 µg/ml.              |
| Reactivity:             | Human   |
| Host:                   | Rabbit  |
| Isotype:                | IgG   |
| Clonality:              | Polyclonal  |
| Immunogen:              | Synthetic peptide corresponding to C-terminal residues of Human NOX1.   |
| Specificity:            | This antibody recognizes Human NADPH Oxidase 1 (NOX1). Other species not tested.  |
| Formulation:            | PBS<br>State: Aff - Purified<br>State: Liquid purified IgG fraction<br>Stabilizer: 50% Glycerol<br>Preservative: 0.01% Sodium Azide |
| Concentration:          | lot specific  |
| Purification:           | Immunoaffinity Chromatography   |
| Conjugation:            | Unconjugated  |
| Storage:                | Store undiluted at 2-8°C for one month or (in aliquots) at -20°C for longer.<br>Avoid repeated freezing and thawing.                |
| Stability:              | Shelf life: one year from despatch.   |
| Predicted Protein Size: | 65 kDa (Predicted)  |
| Gene Name:              | NADPH oxidase 1   |
| Database Link:          | <a href="#">Entrez Gene 27035 Human Q9Y5S8</a>  |

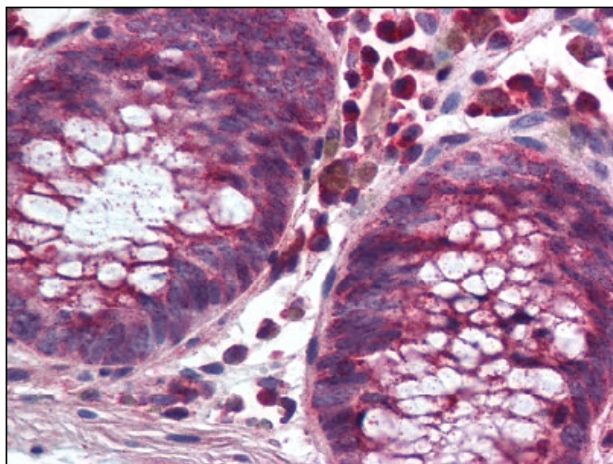


[View online »](#)

**Background:** The NOX family NADPH protein oxidases are involved in transfer of electrons across membranes to generate reactive oxygen species. There are 7 family members - NOX1-5, DUOX1 and DUOX2. Expression of NOX1 is highest in colon tissue; it is also found in vascular tissue and can also be induced by a variety of factors including PDGF. It requires interaction with NOXO1 and NOXA1 for superoxide generation.

**Synonyms:** NADPH oxidase 1, NOH1

**Product images:**



NOX1 antibody staining of Formalin-Fixed Paraffin Embedded Human Colon at 10 ug/ml followed by biotinylated Goat anti-Rabbit IgG secondary antibody, alkaline phosphatase-streptavidin and chromogen.