

Product datasheet for **AP08308PU-N**

DERL3 (N-term) Rabbit Polyclonal Antibody

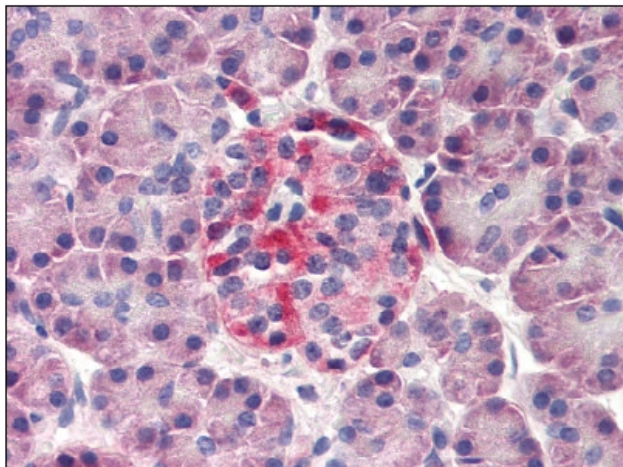
Product data:

Product Type:	Primary Antibodies
Applications:	ELISA, IHC, WB
Recommended Dilution:	ELISA: 1 µg/ml. Immunohistochemistry on Paraffin Sections: 20 µg/ml. Western Blot: 1 µg/ml.
Reactivity:	Human
Host:	Rabbit
Isotype:	IgG
Clonality:	Polyclonal
Immunogen:	Synthetic peptide corresponding to N-terminal residues of Human DERL3 (Derlin-3).
Specificity:	This antibody recognizes Derlin-3/DERL3 (N-term).
Formulation:	PBS containing 0.01% Sodium Azide as preservative and 50% Glycerol as stabilizer. State: Aff - Purified State: Liquid purified Ig fraction.
Concentration:	lot specific
Purification:	Immunoaffinity Chromatography.
Conjugation:	Unconjugated
Storage:	Store the antibody undiluted at 2-8°C for one month or (in aliquots) at -20°C for longer. Avoid repeated freezing and thawing.
Stability:	Shelf life: one year from despatch.
Gene Name:	derlin 3
Database Link:	Entrez Gene 91319 Human Q96Q80
Background:	DERL3 (Derlin-3) may be involved in the degradation process of specific misfolded endoplasmic reticulum (ER) luminal proteins. Its precise role is however unclear
Synonyms:	Der1-like protein 3, DERL3, C22orf14, DER3, LLN2
Note:	Predicted Molecular Weight: 27 kDa.



[View online »](#)

Product images:



Pancreas: Formalin-Fixed Paraffin Embedded (FFPE)